

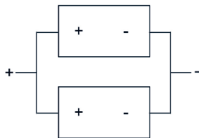
Solar cells G100, G200, G400, G800, G1000

Dimensions			Output Voltage	Output Current
L	W	H		
45	26	7.5	0.45V	100mA
53	36	7.5	0.45V	200mA
75	45	7.5	0.45V	400mA
95	65	7.5	0.45V	800mA

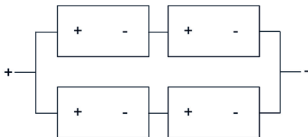
Fully encapsulated solar cell modules mounted in black polycarbonate cases giving an output of 0.45V fitted with threaded stud terminals and a copper busbar enabling simple series or parallel connection for increased output.



Connect multiple units in series to increase voltage



Connect multiple units in parallel to increase current



Connect multiple units in series and parallel to increase both voltage and current.