

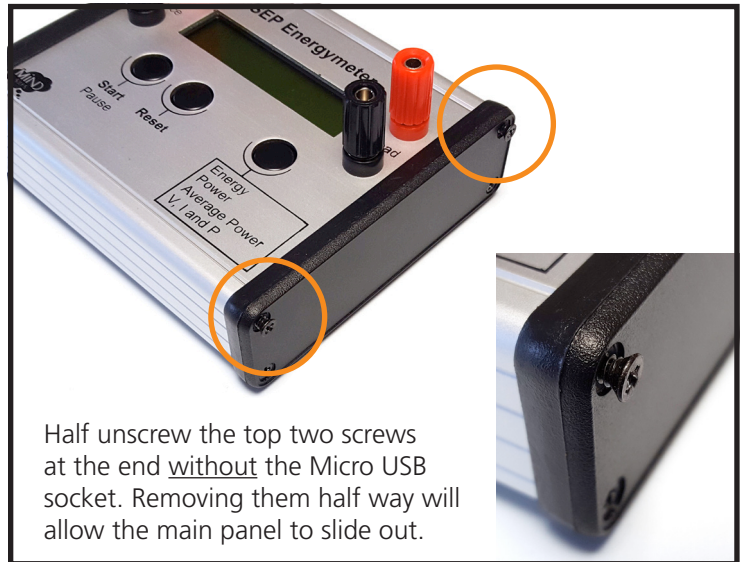
SEP ENERGYSMETER

SEP 044

Fuse Replacement



Remove the four screws at the end with the Micro USB socket.



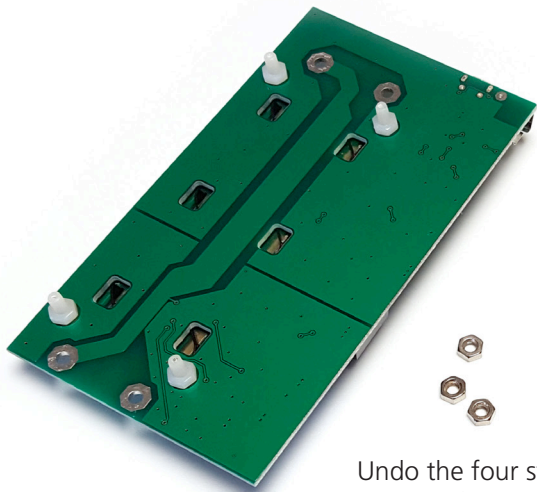
Half unscrew the top two screws at the end without the Micro USB socket. Removing them half way will allow the main panel to slide out.



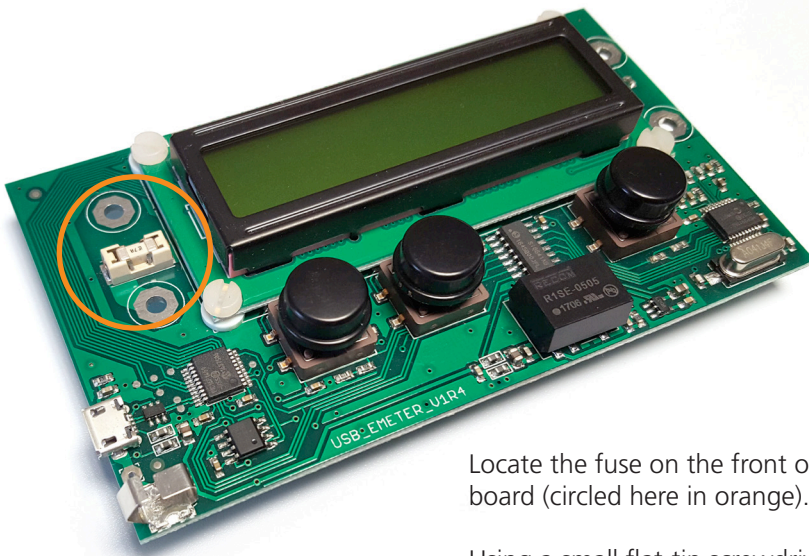
Remove the plastic end panel.



Slide the main panel out of the housing.

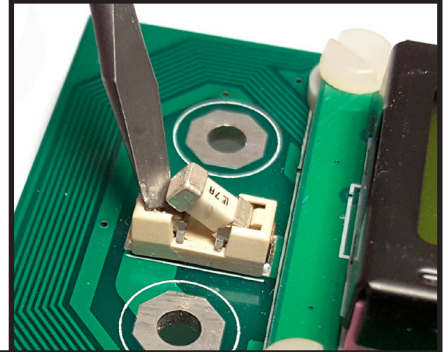
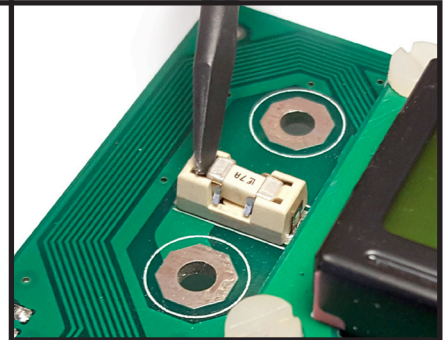


Undo the four steel nuts securing the Circuit board to the metal panel.
Note the four washers on the terminal posts. Take care not to lose these.



Locate the fuse on the front of the circuit board (circled here in orange).

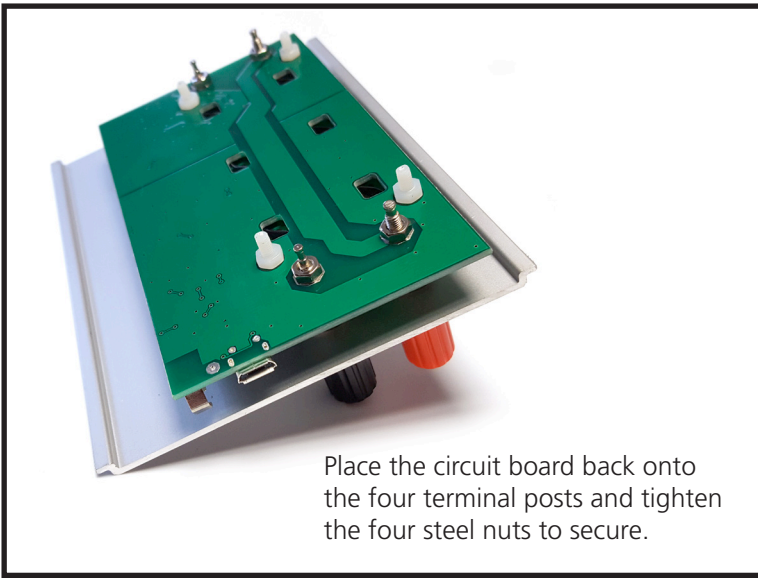
Using a small flat-tip screwdriver or similar; carefully prise the fuse out, taking care not to damage the fuse holder.



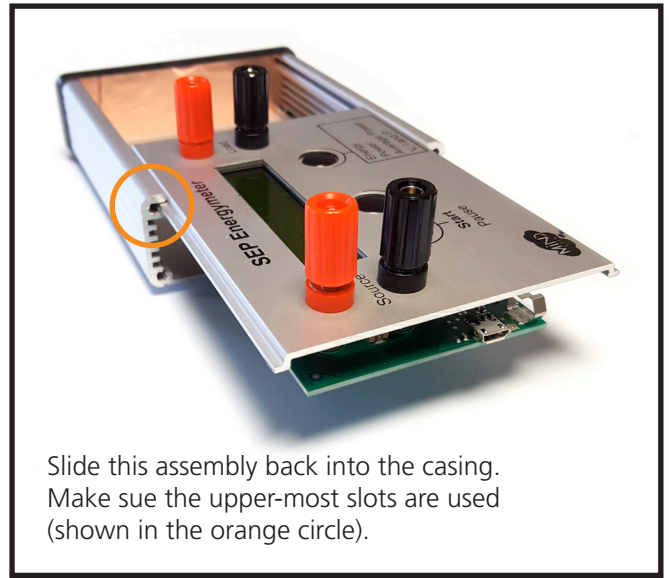
Replace the fuse by simply pressing into the fuse holder.

If you removed the four washers when removing the circuit board, replace them now.





Place the circuit board back onto the four terminal posts and tighten the four steel nuts to secure.



Slide this assembly back into the casing. Make sure the upper-most slots are used (shown in the orange circle).



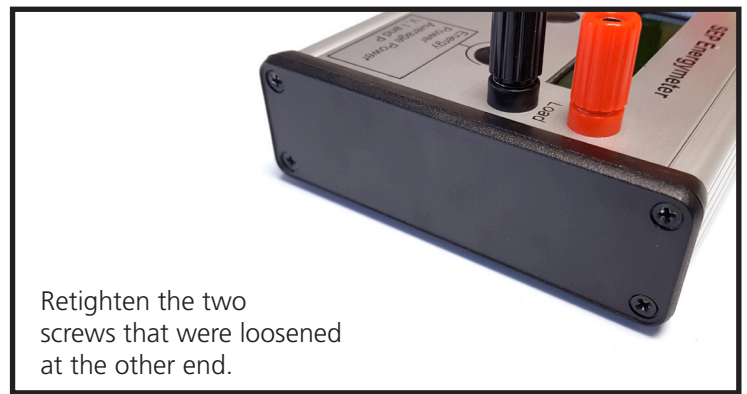
Make sure this main plate slides all the way in so that the ends are flush.



Carefully fit the black plastic end panel on making sure the rectangular hole in the panel aligns with the micro USB socket.



Refit the four screws to secure the end panel.



Retighten the two screws that were loosened at the other end.



Your Energymeter should now be fully functional.