

## Moticam 1080 HDMI & USB

### FULL HD CAMERAS

The Full HD affordable multi-tasking microscopy camera. The Moticam 1080 is dedicated to documentation of microscopic results with a clear focus on maximum colour fidelity and fast live image.

It does not require a computer for standard operation, as it comes with an on-board software that will allow you to use it by simply connecting it to a screen through its HDMI port, and with a mouse connected to the USB port of the camera.

[www.moticamseries.com](http://www.moticamseries.com) | [www.moticeurope.com](http://www.moticeurope.com)

## FULL HD STANDALONE CAMERA





## Moticam 1080 TECHNICAL SPECIFICATIONS

<b>Sensor Type</b>	CMOS
<b>Sensor Size</b>	1/2.8"
<b>Resolution</b>	8.0 MP
<b>Capture format (on SD-card)</b>	Still Image 3840 x 2160 (8.0MP) / Video Full HD 1920 x 1080
<b>Live Display Mode (through USB)</b>	1920 x 1080 (Full HD) @ 30 fps*
<b>Live Display Mode (through HDMI)</b>	1920 x 1080 (Full HD) @ 60 fps*
<b>Pixel Size</b>	2.8µm x 2.8µm
<b>Data Transfer</b>	HDMI (1080p) and USB2.0
<b>Slot</b>	SD Card (max 32Gb)
<b>Supported OS</b>	Microsoft Windows XP SP3/Vista/7/8/10 and MAC OSX & Linux
<b>Minimum Computer Requirements</b>	2GHz dualcore – RAM memory 2GB – Video memory min. 512 MB
<b>Lens Mount</b>	C-Mount
<b>On-board software</b> (Camera connected through HDMI to a HD screen and through USB to a mouse)	<b>Standard tools</b> Still image capture, Live image record, Zoom in & out, Magnifier, ROI, Mirror, Rotation, Split, Freeze, Cross line, Gallery.
	<b>Image adjustments (AE/AWB)</b> Auto/Manual Exposure mode, Gain, Target Brightness setting, Light Frequency, Auto/Manual White Balance mode.
	<b>Advanced settings</b> Saturation, Contrast, Gamma, Sharpness, Denoise, User settings, System's Time setting, Language (English, Chinese and Japanese), Format SD card.
<b>Package Includes</b>	CS Ring Adaptor, HDMI cable, Focusable Lens, 30mm and 38mm Eyepiece Adapters, USB 2.0 Cable, Calibration Slide, Macro Tube, Motic Images Plus 3.0 for PC/OSX/Linux

*\*frames per second  
under optimal illumination conditions*

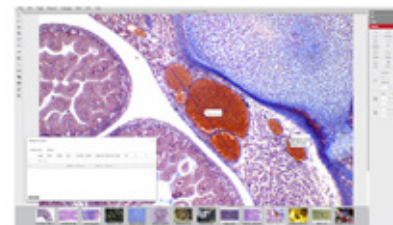
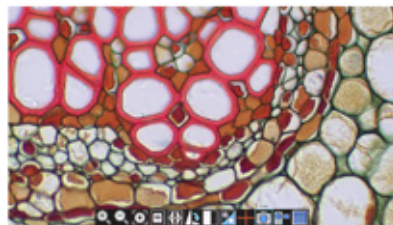
### ON-BOARD SOFTWARE & MOTIC IMAGES PLUS 3.0 SOFTWARE

### THE [AllinOneBOX] CONCEPT

Everything that you may need to work with your Moticam is included in one box

#### On-board software

The Moticam 1080 has its own built-in software, making it possible to view live images, make image adjustments or edit them. You can also capture images or record videos directly from a screen with the help of a mouse, storing them in an SD card.



#### Motic Images Plus 3.0

By connecting your Moticam to your computer you will be able to work with our well-known software, that comes included in the package. View, capture, edit, measure, make reports... all its standard features and the new ones packed in a new user-friendly interface.