



QUICK START GUIDE

PANOSPACE I





COMPONENTS

NOTE: Please make sure all components below are accounted for and are not damaged before proceeding to the next step. For damaged or missing components please call **888-770-8078** (USA) or **+ 46 322 66 87 45** (Europe) for assistance.



Printer



User Manual



Warranty Card

Adjustment Tool



Power Cord



Power Adaptor



Printer Cable



Filament Roll



Glue Stick



Scraper

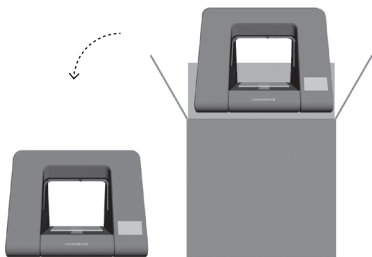
Teflon Tube



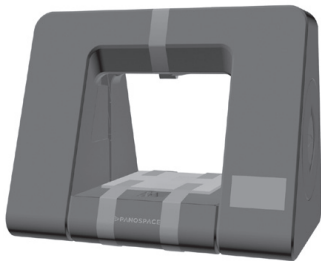


UNPACKING PRINTER

Thank you for purchasing our PanoSpace I 3D Printer. We pride ourselves in having the most innovative products on the market with cutting edge technology that is easy to use. We are dedicated to making the most enriching learning experiences for you and hope you have as much fun using it as we did creating it!



1. Carefully take the printer out of the box and place it on a sturdy table.



2. Carefully remove all fastening tapes.
NOTE: Be extra careful when removing tape from print bed and filament holder cover.

CAUTION!

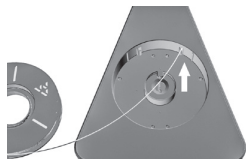
DO NOT TOUCH THE EXTRUDER WHILE HEATING OR PRINTING.
AN ADULT MUST BE PRESENT WHEN USED BY CHILDREN UNDER 12.
KEEP HANDS AWAY FROM ALL MOVING PARTS.

STOP

DO NOT RETURN THIS PRODUCT BACK TO THE STORE PLEASE CALL **888-770-8078** (USA) OR **+ 46 322 66 87 45** (EUROPE) FOR QUESTIONS, SERVICE & OR ASSISTANCE

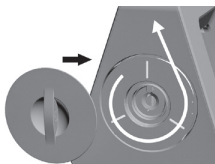
1

LOADING FILAMENT

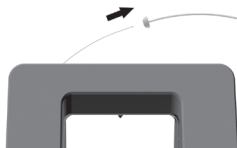


LEFT FILAMENT HOLDER

- 1 Open left filament holder cover & top lid, insert filament through the right hole on top of the filament holder as indicated above.



- 2 Place filament roll into the holder & close the filament holder cover.



- 3 Insert filament through Teflon tube. Make sure the filament goes all the way through the Teflon tube.

NOTE:The Teflon tube is used just as a guide for the filament.



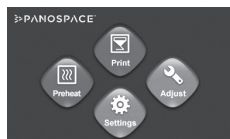
- 4 Insert filament into the hole on top of the extruder & close top lid.



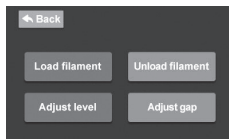
- 5 Connect power cord to the power adaptor. Plug it in to a grounded wall receptacle.



- 6 Turn on power switch. The printer should start the initialization process at this point.



- 7 Click the "Adjust" button on your printer's touch screen.



- 8 Then click the "Load filament" button.

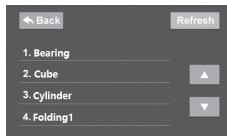


- 9 Follow the instructions on the screen, & extrude filament until you see it come out of the print head. Then click the "Finish" button.

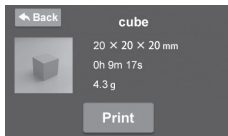
2

PRINTING FROM THE PRINTERS TOUCH SCREEN

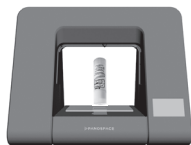
We recommend you do a test print first from the preselected 3D models installed directly in your PanoSpace printer to familiarize yourself with our product. **NOTE:** Your print bed should already be leveled and ready to print. Sometimes shipping can cause a tweak in the bed, if that is the case please refer to the user manual for leveling instructions.



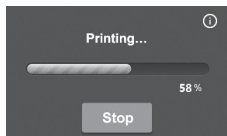
- 1 Go to the main menu on the printer's touch screen & click the "Print" button. Choose any of the 3D models from the list.



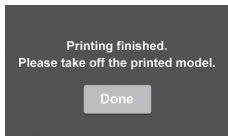
- 2 Confirm your selection by pressing the "Print" button.



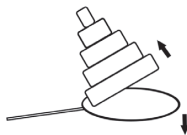
- 3 Apply two thin layers of glue to the print bed with the supplied glue stick before continuing.



- 4 Your 3D model will start to print at this stage. The screen will also have a progress bar to indicate the progress of the print.



- 5 Take the printed model off the print bed with the supplied scraper tool. Then click the "Done" button.



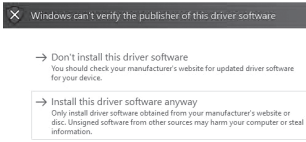
- 6 Peel the base from the printed model.

3

DOWNLOAD & INSTALL SOFTWARE

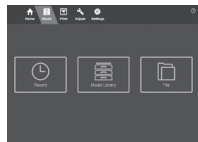
- 1 Go to www.3dpanospace.com & download PanoBuilder installer.
- 2 Choose PanoBuilder installer to install software onto your computer.

NOTE:if you see the security window, please choose “Install this driver software anyway” option.

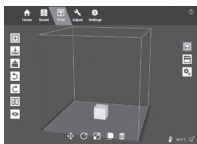


4

PRINTING FROM PANOBUILDER



- 1 Connect printer cable from your computer to your PanoSpace printer. Turn printer ON.
- 2 Open PanoBuilder and click the “Model” button.
- 3 Select model either from model library or your computer.

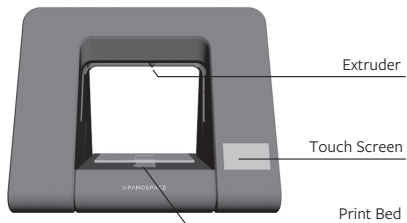


- 4 Click the “Print” button on the right of the window.
- 5 Confirm the information of the model to be printed. Apply glue before continuing.
- 6 Your 3D model will start to print at this stage.

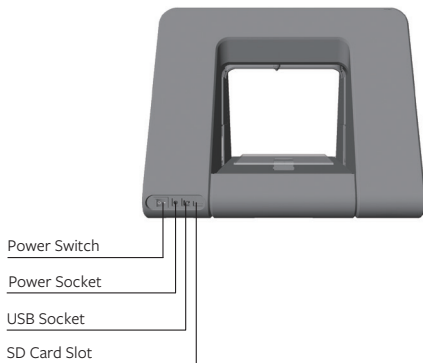


KNOWING YOUR PRINTER

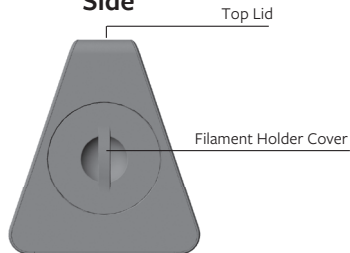
Front



Back



Side



For detailed information, please read the user manual.



PANOSPACE USA
2078 E. Francis St.
Ontario, CA 91761
www.3dpanospace.com

Customer Service/Tec Support:
US +1 888-770-8078
Europe +46 322 66 87 45