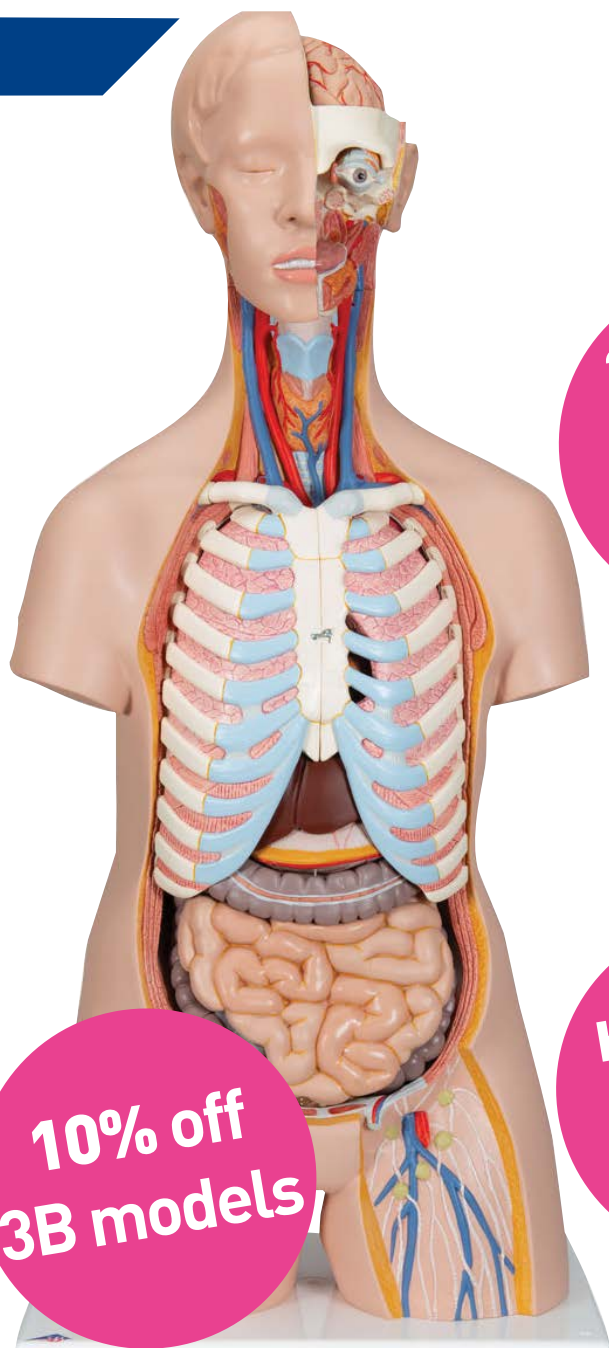


Back to School



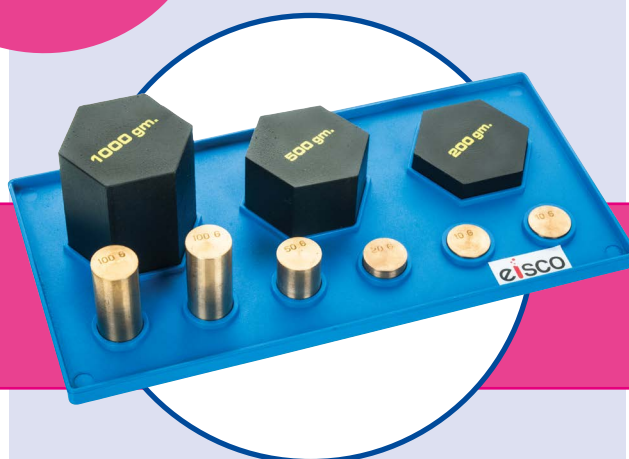
**10% off
3B models**



**20% off
Ohaus
balances**



**Half Price
Pyrex
glassware**



**Up to 30% off all other
items in this brochure**

Back to School

Welcome to the SLS Select Education 'Back to School' brochure. We know that budgets are very tight in schools across the country so we have worked hard with our suppliers to bring you some great saving on key laboratory items.

All of the products in this brochure are kept in stock with the discounts offered for the whole of the autumn term (orders need to be received by 31st December 2019). We hope you find these offers competitive!

Great Offers

10% off 3B models

20% off all OHAUS until Xmas

Up to £100 off

20% off

Only £3100

Pyrex glassware Page 3

3B Models and Apparatus Page 4

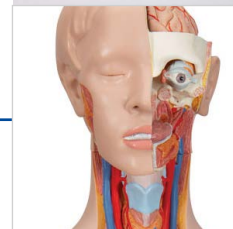
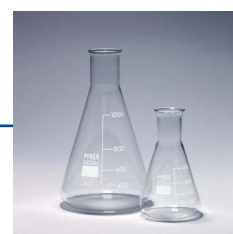
All Ohaus balances Page 6

Prestige Autoclaves Page 8

Azlon beakers Page 8

SMEG dishwasher with accessories & detergent Page 14

Prices valid on orders received by the 31st December 2019.
We reserve the right to change or withdraw any of the offers at any time.



PYREX®

Buy a pack of 100ml and 250ml squat form beakers and get a pack of 100ml tall form beakers AND a pack of 150ml Conical Flasks half price.



Pyrex Offer Bundle 1

Includes:

- 10 x 100ml low form beakers
- 10 x 250ml low form beakers
- 10 x glass beaker 100ml tall form
- 10 x glass 150ml Erlenmeyer flask narrow neck

| Code | Was | Now |
|---------|---------|---------------|
| WEB2004 | £132.68 | £95.33 |



Buy a pack of Test Tubes and Boiling Tubes and get a pack of 100mm test tubes FREE.

Pyrex Offer Bundle 2

Includes:

- 100 x test tubes, 125 x 16mm with rim
- 100 x test tubes, 150 x 24mm with rim
- 100 x test tubes, 100 x 12mm with rim

| Code | Was | Now |
|---------|---------|----------------|
| WEB2006 | £158.70 | £119.65 |



Buy a pack of Boiling Tubes and 250ml Beakers and get a pack of Test Tubes and 100ml beakers half price.

Pyrex Offer Bundle 3

Includes:

- 10 x 100ml low form beakers
- 10 x 250ml low form beakers
- 100 x test tubes, 125 x 16mm with rim
- 100 x test tubes, 150 x 24mm with rim

| Code | Was | Now |
|---------|---------|----------------|
| WEB2008 | £177.63 | £142.26 |

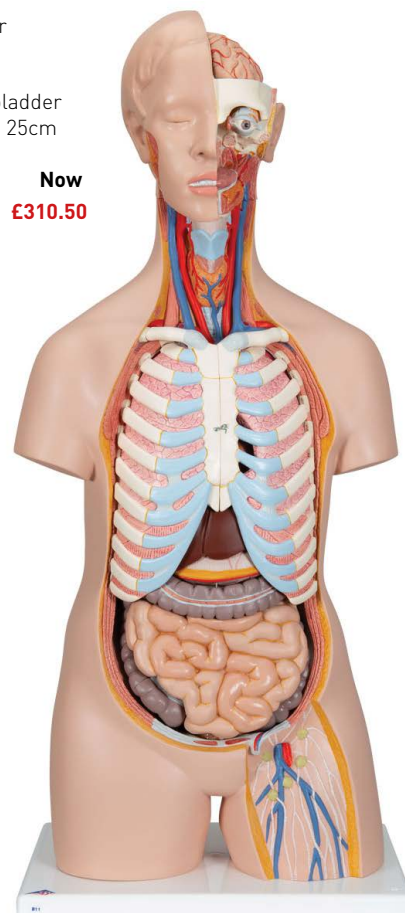
3B Classic Torso, 16 Part

Contains the following removable parts:

- 3-part head
- 2 lungs with sternum and rib attachments
- 2-part heart
- Stomach
- Liver with gall bladder
- 4-part intestinal tract
- Front half of kidney
- Front half of urinary bladder
- Dimensions: 87 x 38 x 25cm

Code **SE1000188** Was £345.00 **Now £310.50**

10%
off all 3B
Models until
Xmas



3B Brain Model, 2 Part

Made of unbreakable vinyl, life-size and anatomically accurate. Delivered with removable base for easy display in a classroom.

Code **SE1000222** Was £68.31 **Now £61.47**

10%
off all 3B
Models until
Xmas



3B Plant Cell Model

The two piece plant cell model shows the structures of a typical plant cell with cytoplasm and cell organelles, as viewed by an electron microscope. The plant cell model is magnified 500,000 to 1,000,000 times.

- Cell wall
- Cell membrane
- Nucleus
- Smooth endoplasmic reticulum (ER)
- Rough endoplasmic reticulum (ER)
- Ribosomes
- Chloroplasts
- Mitochondria
- Dictyosomes/Golgi apparatus

Code **SE1000524** Was £188.51 **Now £169.66**

10%
off all 3B
Models until
Xmas



3B Vibration Generator

Vibration generator for exciting oscillating and waves mechanically, e.g. in coil springs, a rubber cord, a wire ring or a Chladni plate. In robust plastic housing including mounting pin with 4mm socket for attaching accessories.

- Connection: via 4mm safety sockets
- Impedance: 8Ω
- Maximum amplitude: 5mm
- Frequency range: 0 up to 20kHz
- Minimum operating current: 10mA
- Overload protection: 1A fuse

Code **SE1000701** Was £167.09 **Now £150.38**

10%
off until
Xmas



Visit our website for the full range of 3B products - all 10% off.
www.science2education.co.uk

3B Eye Model, 7 Part

- Upper half of the sclera with cornea and eye muscle attachments
- Both halves of the choroid with iris and retina
- Lens
- Vitreous humour

Code **SE1000255** Was £87.90 **Now £79.11**

10%
off all 3B
Models until
Xmas



3B Animal Cell

The two piece animal cell model shows the form and structure of a typical animal cell as viewed by an electron microscope.

- Nucleus
- Mitochondrion
- Smooth Endoplasmic Reticulum (ER)
- Rough Endoplasmic Reticulum (ER)
- Basal membrane
- Collagen fibres
- Golgi apparatus
- Microvilli
- Lysosome

Code **SE1000523** Was £188.50 **Now £169.65**

10%
off all 3B
Models until
Xmas



Electron Diffraction Tube

Highly evacuated electron tube for demonstrating the wave nature of electrons through the observation of interference caused by passage of electrons through a polycrystalline graphite lattice (Debye-Scherrer diffraction) and rendered visible a fluorescent screen. Also intended for determining the wavelength as a function of the anode voltage from the radii of the diffraction rings and the lattice plane spacing of graphite, as well as confirming de Broglie's hypothesis.

| Code | Description | Was | Now |
|-----------|-------------|---------|---------|
| SE1013889 | S Type | £718.74 | £646.86 |
| SE1013885 | D Type | £720.06 | £648.05 |

10%
off until
Xmas



3B 5ft Skeletons

- Final assembly carried out by hand
- Made from a durable, unbreakable synthetic material
- Close to the realistic weight of around 200 bones
- Natural skeleton size
- 3 part assembled skull
- Individually inserted teeth
- Limbs can be removed quickly and easily

Code **SE1013853** Was £200.57 **Now £180.51**

10%
off all 3B
Models until
Xmas



OHAUS Traveler™ Portable Balances

The OHAUS Traveler™ Series was designed with a unique draftshield that offers weigh-thru capability while being used and 'stackability' when being stored.

- All balances are 149 x 73 x 224mm (W x H x D) (to top of draft shield) in size
- AC adapter (Included) or 4 AA batteries (not included)
- Flip-top draftshield design
- Designed to stack
- Calibration lock
- Fixed integral weigh below hook

| Code | Capacity | Readability | Was | Now |
|---------|----------|-------------|---------|----------------|
| BAL3972 | 300g | 0.01g | £161.83 | £129.46 |
| BAL3976 | 500g | 0.1g | £114.98 | £91.98 |
| BAL3980 | 3000g | 0.1g | £174.98 | £139.98 |



OHAUS Scout® Portable Balances

Easy to use with a 4-button keypad and intuitive, visual menu prompts.

- Application: weighing (7 units), counting, percent, display hold, totalisation, check weigh, specific gravity/density
- Display: LCD screen with white LED backlight
- Operation: mains or battery
- Construction: ABS plastic housing with stainless steel pan

| Code | Capacity | Readability | Was | Now |
|---------|----------|-------------|---------|----------------|
| BAL0030 | 120g | 0.001g | £261.79 | £209.43 |
| BAL0031 | 220g | 0.01g | £175.52 | £140.42 |
| BAL0032 | 420g | 0.01g | £217.17 | £173.74 |
| BAL0033 | 620g | 0.01g | £227.15 | £181.72 |
| BAL0034 | 1000g | 0.01g | £257.79 | £206.23 |
| BAL0035 | 2000g | 0.01g | £310.49 | £248.39 |



OHAUS PX Precision Balances

The Pioneer PX combines essential weighing functionality with competitive performance, offering high accuracy and repeatability for applications in laboratory, industrial and education settings.

- Display: Backlit Liquid Crystal Display (LCD)
- Operation: AC adapter (included)
- Communication: RS232 and USB device (included); GLP/ GMP data output with real-time clock
- Construction: Metal base, plastic top housing, removable stainless steel pan, glass draftshield

| Code | Capacity | Readability | Was | Now |
|---------|----------|-------------|---------|----------------|
| BAL1318 | 320g | 0.001g | £542.71 | £434.17 |
| BAL1324 | 520g | 0.001g | £588.29 | £470.63 |
| BAL1330 | 3200g | 0.01g | £567.67 | £454.11 |



For the wider range of Ohaus with 20% off all products please visit: www.science2education.co.uk

OHAUS Compass CR Balances

Basic weighing capabilities at an economical price.

- Space saving stackable design for convenient storage
- Enlarged weighing platform allows for versatile use
- Liquid crystal display (LCD)
- Operation 3 AA batteries (included) or AC adapter (not included)
- ABS housing and pan, transportation lock, slip-resistant feet
- Stability indicator, mechanical and software overload/underload protection, auto shut-off

| Code | Model | Capacity | Readability | Was | Now |
|---------|--------|----------|-------------|--------|---------------|
| BAL1470 | CR221 | 220g | 0.1g | £39.00 | £31.20 |
| BAL1472 | CR621 | 620g | 0.1g | £45.00 | £36.00 |
| BAL1474 | CR2200 | 2200g | 1g | £39.00 | £31.20 |
| BAL1476 | CR5200 | 5200g | 1g | £45.00 | £36.00 |



Prestige Classic Media Autoclave

- Safety as standard – interlock safety mechanism prevents opening until a safe temperature has been reached
- Simple to operate – one touch button, full automatic cycle
- 121°C sterilising temperature
- 1.05 bar operating pressure
- 500ml max capacity
- Optional printer for quick and easy data recording

| Code | Description | Max Load | Was | Now |
|---------|-------------|----------|----------|----------------|
| AUT4515 | 9L | 3kg | £898.00 | £835.00 |
| AUT4517 | 12L | 4kg | £1095.00 | £995.00 |

Up to
£100
off



GP Zinc Chloride Batteries

GP Greencell batteries are ideal for applications where the drain is very low, where usage is only very occasional or where performance is not an issue.

| Code | Size | Voltage | Was | Now |
|---------|------|---------|-------|--------------|
| BAT8001 | AAA | 1.5V | £0.27 | £0.20 |
| BAT8002 | AA | 1.5V | £0.50 | £0.38 |
| BAT8004 | C | 1.5V | £1.01 | £0.76 |
| BAT8006 | D | 1.5V | £1.20 | £0.90 |

25%
off



Forcemeters

High quality plastic tubular spring balances which are colour coded and scaled in both newtons and grams. The stainless steel spring mechanism is clearly visible and zero adjustment is incorporated.

| Code | Description | Colour | Was | Now |
|----------|-------------|--------|-------|--------------|
| ATSP0250 | 250g/2.5N | Blue | £1.38 | £1.24 |
| ATSP0500 | 500g/5N | Green | £1.38 | £1.24 |



Azlon Low Form Beakers

Azlon polypropylene tapered beaker, translucent, with spout and moulded graduations. Stackable.

| Code | Capacity | Pack | Was | Now |
|---------|----------|------|--------|---------------|
| BEA5122 | 50ml | 10 | £8.29 | £6.63 |
| BEA5124 | 100ml | 10 | £11.65 | £9.32 |
| BEA5126 | 250ml | 10 | £16.65 | £13.32 |
| BEA5128 | 400ml | 10 | £22.75 | £18.20 |
| BEA5130 | 500ml | 10 | £26.09 | £20.87 |
| BEA5132 | 600ml | 5 | £14.72 | £11.78 |
| BEA5134 | 1000ml | 5 | £17.45 | £13.96 |
| BEA5136 | 2000ml | Each | £6.41 | £5.13 |



20%
off

Azlon®

Azlon Squat Form Beakers

A squat form straight sided beaker, translucent, with spout and approximate printed graduations. Fully autoclavable.

| Code | Capacity | Pack | Was | Now |
|---------|----------|------|--------|---------------|
| BEA5022 | 25ml | 10 | £13.87 | £11.10 |
| BEA5024 | 50ml | 10 | £11.42 | £9.13 |
| BEA5026 | 100ml | 10 | £13.98 | £11.19 |
| BEA5028 | 250ml | 10 | £21.48 | £17.18 |
| BEA5030 | 400ml | 10 | £27.03 | £21.63 |
| BEA5034 | 600ml | 5 | £17.34 | £13.87 |
| BEA5036 | 1L | 5 | £20.12 | £16.10 |
| BEA5038 | 2L | Each | £6.80 | £5.44 |



20%
off

Azlon®

Beakers, Plastic

Polypropylene with plastic moulded graduations.

| Code | Capacity | Was | Now |
|---------|----------|-------|--------------|
| BEA6000 | 50ml | £0.24 | £0.22 |
| BEA6002 | 100ml | £0.28 | £0.25 |
| BEA6004 | 250ml | £0.39 | £0.35 |
| BEA6006 | 500ml | £0.62 | £0.56 |
| BEA6008 | 1L | £0.94 | £0.85 |

10%
off



Beehive Shelf

Made of porcelain, glazed both inside and out. For use in pneumatic troughs for gas collection.

| Code | Diameter | Was | Now |
|---------|----------|-------|--------------|
| BHSHL07 | 70mm | £1.38 | £0.99 |
| BHSHL10 | 100mm | £1.73 | £0.99 |

Only
£0.99
each



Burner, Liquid Fuel

For use with Ethanol or Industrial Methylated Spirit, 125ml glass reservoir with wick and cap.

| Code | Was | Now |
|---------|-------|--------------|
| BUR4510 | £3.19 | £2.87 |

10%
off



Burette, Class B

Single bore with interchangeable glass stopcock.

| Code | Was | Now |
|---------|-------|--------------|
| BUR1208 | £7.99 | £7.19 |

10%
off



Bunsen Burner

Nickel plated with air regulator. Fitted with 10mm rifled inlet tube, mounted on a stove enamelled steel base. Natural gas, 13mm.

| Code | Was | Now |
|---------|-------|--------------|
| BUR3000 | £5.69 | £3.98 |

30%
off



Bunsen Burner, Economy

A robust and economically priced natural gas burner consisting of a pressed metal base and 13mm nickel plated brass chimney. Natural gas. Recommend tubing: C758-8 (red rubber tubing).

| Code | Now |
|---------|--------------|
| BUR3005 | £2.95 |

Only
£2.95
each



Bunsen Burner, Square Base

Next Gen™ natural gas burner comprising of nickel plated brass tube, with rotatable air regulator, fitted with flame stabilizer and mounted on die-casted non-tipping base.

- Expanded base prevents easy tipping, even with hoses connected
- Spaced feet so burner fits comfortably under stands
- Easy carry handle – carry a hot burner with ease and safety using finger handle
- Tube dia: 13mm, height: 145mm, weight: 300g

| Code | Was | Now |
|---------|-------|--------------|
| BUR6050 | £8.09 | £7.28 |

10%
off



Boss Head, Small Block Type

Aluminium die casted, holds rods at right angle with plastic head thumbscrews can take rods up to 16mm dia.



| Code | Was | Now |
|---------|-------|-------|
| EDU1150 | £2.09 | £1.88 |

10% off

Spring Balance

| Code | Force | Was | Now |
|---------|-------|-------|-------|
| EDU1186 | 1N | £1.48 | £1.33 |
| EDU1188 | 10N | £1.48 | £1.33 |

10% off



Dropper Bottles, Economy

Borosilicate glass pipette dropping bottle with glass dropper, high density polythene stopper with dust-proof head and vinyl teat. Both stopper and teat are resistant to acids and alkalis.

| Code | Glass | Capacity | Pack | Was | Now |
|---------|-------|----------|------|--------|--------|
| EDU677A | Clear | 30ml | 6 | £13.65 | £12.29 |
| EDU677B | Clear | 60ml | 6 | £14.27 | £12.84 |
| EDU679A | Clear | 125ml | 6 | £27.39 | £24.65 |
| EDU680A | Amber | 30ml | 6 | £24.65 | £22.18 |
| EDU681B | Amber | 60ml | 6 | £20.01 | £18.01 |
| EDU682A | Amber | 125ml | 6 | £44.87 | £40.39 |



10% off

Digital Water Bath

The PSU Base water bath is a safe and cost-effective digitally controlled, 6L water bath situated within a GrateNells deep tray. The heating element is a sealed silicone unit with a maximum power of 500W.

- Digitally controlled temperature up to 100°C
- Long lasting silicon mat with protective steel case
- Standard 3 pin power lead supplied
- Easily stores away in standard GrateNells storage unit
- Student proof temperature lock
- Dimensions: (H x W x D) 150 x 312 x 417mm
- Weight: 3.8kg

| Code | Was | Now |
|---------|---------|---------|
| EDU2114 | £238.50 | £228.50 |

£10.00 off



10% off

For our latest offers and news follow us on Facebook and Twitter.

Follow us on Twitter @SLS_SE

Like us on Facebook @SLSelectEd

Digital Coulomb Meter

The display shows the number of Coulombs deposited into the instrument, either by current through a resistance or from a capacitor, or from a source of static electricity. Displays up to 199 nC, accuracy $\pm 10\text{nC}$.



| Code | Was | Now |
|---------|--------|--------|
| 231-037 | £40.17 | £36.15 |

10% off

Boyle's Law Apparatus, Premium

The unit uses water instead of the traditional oil which makes the experiment less messy. Water is gradually pumped from a reservoir into a tube containing air. Whilst the volume of air is read from the graduated tube, pressure is measured by a Bourdon gauge. The glass tube is calibrated and has graduations from 0-55cm. Bourdon gauge is fitted with a transparent plastic back to allow students to see its working parts. Supplied with pump.

| Code | Was | Now |
|--------|---------|---------|
| EDU722 | £145.00 | £135.00 |

Only £135.00



Burette Clamp

Casted, with built-in boss head.

10% off

| Code | Description | Was | Now |
|---------|-------------|-------|-------|
| BUR0102 | Singe | £2.93 | £2.63 |
| BUR0104 | Double | £3.15 | £2.84 |

Crucible with Lid, Economy

Porcelain crucibles with lid, glazed inside and outside except base. Note: other sizes are available.

| Code | Capacity | Was | Now |
|------|----------|-------|-------|
| C74A | 15ml | £0.68 | £0.61 |
| C74B | 25ml | £0.88 | £0.79 |

10% off



Calorimeter Heating Blocks

For the experimental determination of the specific heat capacity of different metals. Cylindrical metal blocks, mass 1kg adjusted to an accuracy of $\pm 2\%$. Each block is drilled with two holes, a large central hole 12.5mm diameter for a special immersion heater and a smaller hole 7.5mm diameter for a thermometer or temperature sensor.



| Code | Description | Was | Now |
|--------|-------------|--------|--------|
| CABLAL | Aluminium | £13.63 | £12.27 |
| CABLCU | Copper | £23.33 | £21.00 |
| CABLST | Steel | £6.48 | £5.83 |
| CABLBR | Brass | £20.43 | £18.39 |

10% off

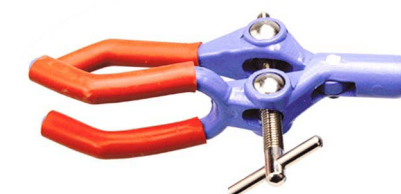
See page 15 for the Immersion Heater (EDU1007N)

Retort Clamps

Made with rubber lined, diecast jaws. Mounted on a 135mm rod of 8mm diameter. Maximum jaw width 90mm and overall length 250mm.

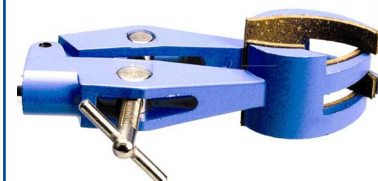
| Code | Was | Now |
|--------|-------|-------|
| CLMP3P | £3.20 | £2.25 |

Only £2.25 each



Retort Clamps

Four prong, cork jaw clamp finished in high quality blue coating. The clamp accepts articles from 2 - 90mm diameter. Rod length 145mm. The cork liners are well secured to the jaws of the clamp. Overall length 245mm.



| Code | Was | Now |
|---------|-------|-------|
| CLMPCRK | £2.50 | £2.25 |

Only £2.25 each

SLS Select Cylinders

An economical yet robust polypropylene cylinder with spout and moulded graduations.

| Code | Capacity | Was | Now |
|---------|----------|-------|-------|
| CYL2080 | 10ml | £0.26 | £0.22 |
| CYL2082 | 25ml | £0.41 | £0.35 |
| CYL2084 | 50ml | £0.52 | £0.45 |
| CYL2088 | 250ml | £1.14 | £1.05 |
| CYL2090 | 500ml | £1.88 | £1.75 |
| CYL2092 | 1L | £3.85 | £3.50 |

250ml Cylinder Only £1.05



Raybox 12V with Accessories

The raybox can be used in a single-ray mode without using the plano-convex lens. However, with the lens inserted (plane face towards the light source), and using the two-slit, three slit or broad-slit masks, the emergent light can be made to be divergent, convergent or parallel by adjusting the position of the light source in relation to the lens. 12V (AC or DC) connected to two 4mm sockets on the raybox. 12V 10W festoon bulb, length 43mm. Accessories included.

| Code | Was | Now |
|---------|--------|--------|
| EDU039N | £14.88 | £14.14 |



5% off



Calorimeters

Calorimeter with parallel sides and rolled rim, supplied without stirrer.

5% off

| Code | Description | Was | Now |
|---------|-------------|-------|-------|
| PH0438A | Copper | £3.83 | £3.63 |
| PH0438B | Copper | £4.85 | £4.60 |
| PH0440A | Aluminium | £2.95 | £2.80 |

Charles Law in a Gratnells Tray

The same as our current Charles Law Apparatus, but in a convenient pack of 10 units. Supplied in a Gratnells storage tray. Complete with oil in the capillary tube.

Specification:
Height 33.5cm x width 40cm x depth 1.5cm
Capillary tube 0-20cm reading
Thermometer -10-100°C

| Code | Pack | Was | Now |
|--------|------|---------|---------|
| PY1377 | 10 | £153.75 | £143.75 |

£10.00 off



Deflagrating Spoon

Steel cup and rod held in with a dished aluminium cap. Length: 350mm; cap: 90mm; cup: 18mm.

| Code | Was | Now |
|---------|-------|-------|
| 612-019 | £1.28 | £1.22 |



5% off

Displacement Vessels (Eureka)

Metal displacement vessels with spout.

| Code | Description | Was | Now |
|--------|-------------|-------|-------|
| PH0116 | 100 x 50mm | £2.85 | £2.71 |
| PH0118 | 225 x 125mm | £7.15 | £6.79 |



5% off

Displacement Vessel, Plastic

Polypropylene, medium size, with spout.

| Code | Was | Now |
|--------|-------|-------|
| PY2012 | £1.38 | £1.31 |

5% off



Component Holder

Pack of mounted clips to hold components in physics investigations.

| Code | Pack | Was | Now |
|----------|------|--------|--------|
| 231-034N | 8 | £18.31 | £17.39 |

5% off



Electrolysis Kit

Electrolysis kit made of high impact polystyrene in 2 parts, transparent cup and base. The cup is cone shaped and can be easily placed over the electrodes. The base is fitted with two 4mm banana plugs and 40mm opening in which electrodes can be easily mounted. Total height 175mm, cup height 80mm and diameter approx 100mm.

| Code | Was | Now |
|---------|--------|--------|
| 3556EDU | £20.30 | £19.95 |



Only £19.95

Mounted Components

| Code | Description | Was | Now |
|-----------|--------------------------|-------|-------|
| 231-038 | M.E.S. Lampholder | £1.94 | £1.75 |
| ED231-039 | D-Cell Holder | £1.55 | £1.40 |
| ED231-040 | Push Switch | £1.83 | £1.64 |
| ED231-041 | Buzzer | £2.81 | £2.52 |
| 231-070 | Rheostat | £2.14 | £1.93 |
| 231-071 | Universal Clip | £1.99 | £1.79 |
| 231-072 | Electrode Holder | £2.09 | £1.88 |
| 231-073 | Changeover Switch | £2.09 | £1.88 |
| SE2060 | Resistor 82 Ohm | £1.84 | £1.65 |
| SE2062 | Resistor 330 Ohm | £1.84 | £1.65 |
| SE2064 | Capacitor 2200uF | £1.84 | £1.65 |
| SE2066 | Thermistor 4.7k Ohm | £1.84 | £1.65 |
| SE2068 | Resistor 50 Ohm | £1.84 | £1.65 |
| SE2070 | Resistor 100 Ohm | £1.84 | £1.65 |
| SE2076 | Light Dependent Resistor | £1.84 | £1.65 |



10% off



PSU Base Power/Energy Meter

The Power Energy Meter uses a large backlit display which display four important parameters.

- The voltage across the load (V)
- The current flowing through the load (A)
- The power dissipated by the load (W)
- The amount of energy converted by the load (Wh)

A low voltage power pack that accepts input voltages in the range 6.5-100V DC. The load (which may draw up to 20A) is connected to the load terminals.

| Code | Now |
|---------|--------|
| EDU2118 | £49.99 |

Only £49.99



Forceps, Stainless Steel

130mm, blunt tip.

| Code | Pack | Was | Now |
|-------|------|-------|-------|
| B170A | 10 | £7.13 | £6.95 |



Volumetric Flask, Class B

Borosilicate glass with one graduation mark. Fitted with chemical resistance polypropylene stopper. White graduation and cap.



| Code | Capacity | Stopper | Pack | Was | Now |
|---------|----------|---------|------|--------|-------|
| FLA0120 | 10ml | 10/19 | 2 | £3.11 | £2.60 |
| FLA0122 | 25ml | 10/19 | 2 | £3.80 | £3.45 |
| FLA0124 | 50ml | 12/21 | 2 | £4.59 | £4.25 |
| FLA0126 | 100ml | 14/23 | 2 | £4.75 | £4.20 |
| FLA0128 | 250ml | 14/23 | 2 | £6.98 | £5.95 |
| FLA0130 | 500ml | 19/26 | 2 | £9.23 | £7.95 |
| FLA0132 | 1000ml | 24/29 | 2 | £11.88 | £9.95 |

Filter Paper, Economy

An economical but effective quality paper for general purpose use with medium retention and flowrate.

| Code | Dia. | Pack | Was | Now |
|--------|-------|------|-------|-------|
| FLP090 | 90mm | 100 | £1.01 | £0.86 |
| FLP110 | 110mm | 100 | £1.83 | £1.55 |
| FLP125 | 125mm | 100 | £2.27 | £1.93 |
| FLP150 | 150mm | 100 | £3.01 | £2.56 |

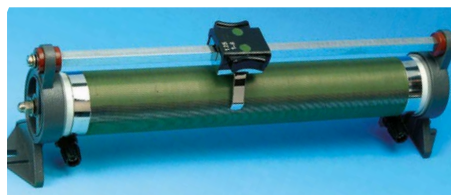


15% off

Rheostat

Wound with heavily oxidised resistance wire on a vitreous enamel steel tube with the winding, which is supported on robust diecast end stands. Tube size 200 x 43mm.

| Code | Resistance | Max. Current | Was | Now |
|---------|------------|--------------|--------|--------|
| ORH0008 | 8.5 ohms | 5.0A | £21.83 | £20.19 |
| ORH0016 | 16 ohms | 4.0A | £18.58 | £17.19 |
| ORH0020 | 20 ohms | 4.5A | £35.51 | £32.85 |
| ORH0055 | 55 ohms | 2.3A | £21.69 | £20.06 |
| ORH0125 | 125 ohms | 1.8A | £31.80 | £29.42 |
| ORH0135 | 135 ohms | 1.4A | £20.91 | £19.34 |
| ORH0300 | 300 ohms | 0.9A | £20.91 | £19.34 |
| ORH1600 | 1600 ohms | 0.3A | £19.89 | £18.40 |



7.5% off

Nitrile Examination Gloves, Powder Free

GlovePlus Prime is the ideal glove for use over short periods of time where splash contact from aggressive chemicals is unlikely. Blue.

| Code | Description | Pack | Was | Now |
|---------|-------------|------|-------|-------|
| SAF5520 | XS | 100 | £4.57 | £4.34 |
| SAF5522 | S | 100 | £4.57 | £4.34 |
| SAF5524 | M | 100 | £4.57 | £4.34 |
| SAF5526 | L | 100 | £4.57 | £4.34 |
| SAF5529 | XL | 90 | £4.50 | £4.27 |



5% off

Rubber Stoppers

Solid. Constructed from high-quality, chemical resistant rubber. Stated dimensions are bottom dia. x top dia. x length, respectively.

| Code | Dimensions | Was | Now |
|---------|------------------|-------|-------|
| C314-13 | 13 x 16 x 24mm | £0.91 | £0.82 |
| C314-15 | 15 x 18 x 24mm | £0.92 | £0.83 |
| C314-19 | 19 x 22.5 x 28mm | £2.19 | £1.97 |
| C314-21 | 21 x 24.5 x 28mm | £2.12 | £1.91 |

10% off



Haemocytometer

Haemocytometer, improved Neubauer pattern for estimating particles in suspension. Cell with two counting grids, separated by a central trough, divided into 400 squares 0.05 x 0.05mm. 22 x 22 cover slips not included.

| Code | Was | Now |
|---------|--------|--------|
| 406-001 | £32.12 | £28.50 |

Only £28.50



Immersion Heater

12V, 48W heater, 100mm long, 12mm diameter. A special heater designed for use with metal block calorimeters.

| Code | Was | Now |
|----------|--------|--------|
| EDU1007N | £16.95 | £15.26 |

10% off



Polypropylene Jug

| Code | Capacity | Was | Now |
|--------|----------|-------|-------|
| 451843 | 250ml | £0.74 | £0.63 |
| 451851 | 500ml | £1.08 | £0.92 |

15% off



Simple Distillation Secure Joint

Borosilicate glass, joint size 24/29. Comprises of:

- Round bottom flask – 250ml
- Still head
- Liebig condenser Receiver adaptor

| Code | Now |
|--------|--------|
| QF2006 | £34.02 |

Only £34.02



Linear Air Track with Accessories

Triangular section aluminium alloy track, length 200cm, with two rows of air holes through which air emerges forming an air cushion on which the vehicles float. The vehicles show linear motion under virtually frictionless conditions.

Accessories:

- Magnets x2
- Horns with elastic bands x3
- Black cards x3
- Velcro pads x1

N.B. Light gates are not included as standard - please contact us for details.

| Code | Description | Was | Now |
|---------|--------------------------------|---------|---------|
| SEP4371 | Linear Air Track + Accessories | £155.00 | £124.00 |
| SEP4372 | Blower only | £199.00 | £159.20 |

20% off



Mounted SBC Lamp Holder

A brass SBC lamp holder mounted on a metal base fitted with 4mm sockets. Complete with 12V 21W lamp.

| Code | Was | Now |
|---------|-------|-------|
| EL06564 | £5.90 | £4.40 |

25%
off



4mm Stackable Leads

500mm. Body and spring are nickel plated machined brass. Max. current 15A.

| Code | Description | Was | Now |
|---------|-------------|-------|-------|
| EL10110 | Red | £0.85 | £0.81 |
| EL10112 | Black | £0.85 | £0.81 |

5%
off



Eye Model, 7 Part

This model is three times full size.

| Code | Now |
|------|--------|
| AM26 | £16.28 |

Only
£16.28



Slotted Mass Set, 1kg

9 x 100g plus 1 x 100g hanger.

| Code | Was | Now |
|--------|--------|--------|
| 451118 | £15.25 | £12.97 |

25%
off



Steel & Brass Weighing Set

| Code | Was | Now |
|--------|--------|--------|
| 451126 | £18.62 | £15.83 |



15%
off

Bench Mats

Calcium silicate, asbestos free bench mat. Well finished edges and packed in sturdy cartons.

| Code | Description | Pack | Was | Now |
|---------|-------------|------|--------|--------|
| EDU1008 | 150 x 150mm | 10 | £5.03 | £4.78 |
| EDU1009 | 230 x 230mm | 10 | £10.83 | £10.29 |
| EDU1010 | 300 x 300mm | 10 | £12.25 | £11.64 |



5%
off

Masses, Brass Slotted Sets

- EDU087 includes: 10g hanger, 9 x 10g masses
- EDU088 includes: 50g hanger, 9 x 50g masses

| Code | Description | Was | Now |
|--------|-------------|--------|--------|
| EDU087 | 100g Set | £5.43 | £4.89 |
| EDU088 | 500g Set | £14.88 | £13.39 |

10%
off



Ganong's Potometer

For demonstration of transpiration rates and rates of water absorption by a cut shoot under various external conditions. The whole apparatus is mounted on a varnished wooden base by spring clips. Base: 20 x 80mm; capillary bore: 1mm.

| Code | Was | Now |
|------|--------|--------|
| B192 | £25.88 | £19.41 |

25%
off

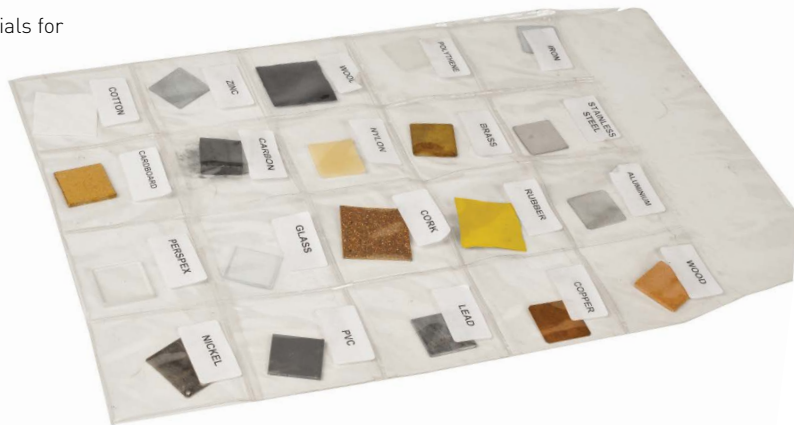


Materials Collection for Magnetism

A collection of twenty various magnetic and non-magnetic materials for teaching the principles of magnetism.

| Code | Was | Now |
|----------|--------|--------|
| 221-003N | £18.65 | £16.78 |

10%
off



Masses Zinc Plated Steel Set, 1kg

Steel zinc plated masses, tolerance 5%. Includes 1 x 100g hanger and 9 x 100g slotted masses.

| Code | Was | Now |
|---------|-------|-------|
| EDU1184 | £4.95 | £4.46 |

10%
off



Mass, Cast Alloy

100g (9 x 10g mass, 1 x 10g hanger).

| Code | Was | Now |
|--------|-------|-------|
| EDU904 | £4.54 | £4.09 |

10%
off



Gratnells MakerHub Trolley

The MakerHub is designed to be a multi-functional resource trolley that promotes collaborative working in STEAM activities in the classroom. Standard sized boards (600 x 900mm) are instantly interchangeable – simply lift up and draw down to remove. Comes complete with 4 deep Gratnells trays and two white boards. Includes 75mm braked castors.

- Dimensions (w x d x h): 685 x 430 x 1430mm
- Self-assembly required

| Code | Description | RRP | Now |
|----------|-----------------------|---------|----------------|
| SED2000A | Tropical orange trays | £299.00 | £294.00 |
| SED2000B | Sunshine yellow trays | £299.00 | £294.00 |
| SED2000C | Plum purple trays | £299.00 | £294.00 |
| SED2000D | Royal blue trays | £299.00 | £294.00 |
| SED2000E | Flame red trays | £299.00 | £294.00 |

NEW



Gratnells STEM Double Trolley

Double column unit supplied with 2 x louvered side panels. Comes complete with 4 deep trays, 8 shallow trays, 12 mini bins in green and 5 x single hooks and 5 x double hooks. Fitted with StopSafe™ runners, includes 75mm braked castors.

- Dimensions (w x d x h): 690 x 430 x 1025mm
- Self-assembly required

| Code | Description | RRP | Now |
|----------|-----------------------|---------|----------------|
| SED2002A | Tropical orange trays | £295.00 | £290.00 |
| SED2002B | Sunshine yellow trays | £295.00 | £290.00 |
| SED2002C | Plum purple trays | £295.00 | £290.00 |
| SED2002D | Royal blue trays | £295.00 | £290.00 |
| SED2002E | Flame red trays | £295.00 | £290.00 |

NEW



Gratnells STEM Treble Trolley

Treble column unit supplied with 2 x louvered side panels. Comes complete with 4 deep trays, 16 shallow trays, 12 mini bins in green and 5 x single hooks and 5 x double hooks. Fitted with StopSafe™ runners, includes 75mm braked castors.

- Dimensions (w x d x h): 1020 x 430 x 1025mm
- Self-assembly required

| Code | Description | RRP | Now |
|----------|-----------------------|---------|----------------|
| SED2004A | Tropical orange trays | £365.00 | £360.00 |
| SED2004B | Sunshine yellow trays | £365.00 | £360.00 |
| SED2004C | Plum purple trays | £365.00 | £360.00 |
| SED2004D | Royal blue trays | £365.00 | £360.00 |
| SED2004E | Flame red trays | £365.00 | £360.00 |

NEW



Gratnells Callero Plus Flat 4 Shelf Trolley

Callero Plus Flat Shelf Unit with 4 shelves, treble width unit supplied with 4 wide shelves and 3 with recess, supported on flat-position crossbars. Includes feet and 75mm braked castors.

- Dimensions (w x d x h): 1020 x 430 x 1025mm
- Self-assembly required

| Code | Now |
|---------|----------------|
| SED2006 | £175.00 |

NEW



Pipette, Bulb Form

Borosilicate glass, one mark, bulb form, single graduation on upper stem and colour coded.

| Code | Capacity | Colour | Was | Now |
|---------|----------|--------|-------|--------------|
| CH0558A | 1ml | Blue | £1.25 | £0.99 |
| CH0558C | 5ml | White | £1.30 | £0.99 |
| CH0558D | 10ml | Red | £1.30 | £0.99 |
| CH0558G | 25ml | Blue | £1.48 | £0.99 |

Only
£0.99
each



SLS Lab Pro Pipettes

- Single channel
- Ergonomic design
- Click-stop system for volume selection

| Code | Volume | Was | Now |
|---------|------------|--------|---------------|
| SLS4912 | 20-200µL | £44.50 | £44.50 |
| SLS4908 | 100-1000µL | £44.50 | £44.50 |

Only
£44.50



IPC Student Power Supply

Voltage 2, 4, 6, 9, 12 or 14V AC or unsmoothed DC at 4A continuously, or up to 5A for periods of 1 hour. Voltage ranges are selected and locked by means of a removable key. In any incidence of overload, including direct short, a current sensing circuit breaker mounted on the front panel will operate and disconnect the output voltage. Outputs are taken from colour coded 4mm sockets mounted on the front panel.

| Code | Was | Now |
|---------|---------|---------------|
| EL10346 | £105.00 | £95.00 |

£10
off



Precision Pocket pH Meter

This pocket pH meter has the unique feature of a retractable electrode, includes LCD display and a protective cap. Supplied with electrode, protective cap, calibration screwdriver, 50ml calibration solution, carry case and battery.

- Range: pH 0 - 14
- Resolution: 0.01 pH
- Accuracy: +/- 0.01 pH

| Code | Was | Now |
|---------|--------|---------------|
| PHM1900 | £52.17 | £46.96 |

Only
£46.96



LED Raybox

This battery powered economical metal ray box comprises of a die cast enclosure, delivers white light but runs much cooler than conventional incandescent lamp models. It uses the latest cool ultra-bright LED technology giving superior white light. Supplied complete with slit plate and its own battery power source.

| Code | Was | Now |
|---------|--------|---------------|
| EDU1194 | £14.04 | £12.63 |

10%
off



Smeg Glasswasher GW0160

- Washing up to 85°C – antibacterial thermal disinfection
- 7 default programs
- Microprocessor electronic control
- Active thermodynamic drying
- Alkaline powder detergent dispenser
- Peristaltic pump for acid liquid neutraliser
- Washing chamber and internal door in AISI 304 stainless steel
- External panels made of AISI 304 stainless steel
- External dimensions L x D x H: 600 x 600 x 850mm
- Cold water and demineralised water connections
- Electronic door lock system for user safety
- **Offer Includes:** GW0160 glassware washer, upper trolley with sprayer, lower trolley and 10kg of Deterglass detergent.

Only
£3100

| Code | Description | Now |
|----------|------------------|----------|
| WEB19982 | Smeg Glasswasher | £3100.00 |

Delivery and Commissioning is £250 per order.

For more information please visit:
www.science2education.co.uk

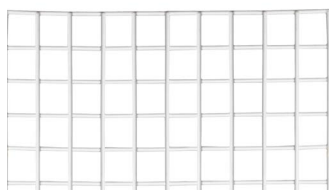


Grid Quadrat

500 x 500mm, 100 squares. Constructed from heavy gauge steel wire, plastic-coated at high temperature to strengthen the welds.

| Code | Was | Now |
|---------|--------|--------|
| QUAD100 | £16.83 | £15.15 |

10%
off



Retort Rods

A range of mild steel and aluminium rods for retort stands. 10 x 1.5mm thread on one end.

10%
off

| Code | Material | Length | Was | Now |
|----------|------------|--------|-------|-------|
| RDMS0600 | Mild Steel | 600mm | £2.55 | £2.30 |
| RDAL0500 | Aluminium | 500mm | £2.62 | £2.36 |
| RDAL0600 | Aluminium | 600mm | £3.05 | £2.74 |
| RDAL0750 | Aluminium | 750mm | £4.23 | £3.81 |



Retort Bases, Standard

Steel base with tapped hole 10 x 1.5mm with metric thread. Finished in blue coating with a milled finished base.

| Code | Dimensions | Was | Now |
|----------|-------------|-------|-------|
| BASE160T | 160 x 100mm | £4.18 | £3.76 |
| BASE200T | 200 x 125mm | £5.97 | £5.37 |
| BASE250T | 250 x 160mm | £9.03 | £8.12 |



10%
off

Clifton NE1D digital water bath and free lid

Simple digital controller for setting temperature with 1°C divisions. Designed for immersion of flasks, bottles and racks in a highly stable temperature environment. 3 Year Warranty.

| Code | Now |
|---------|---------|
| WEB2020 | £360.94 |

Free Lid
worth
£52.50



MIX
Paper from
responsible sources
FSC® C017574



SLS Select Education

Tel: 0115 982 2022

Fax: 0115 945 5379

www.science2education.co.uk

sales@science2education.co.uk