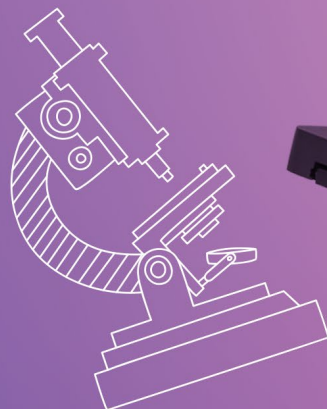
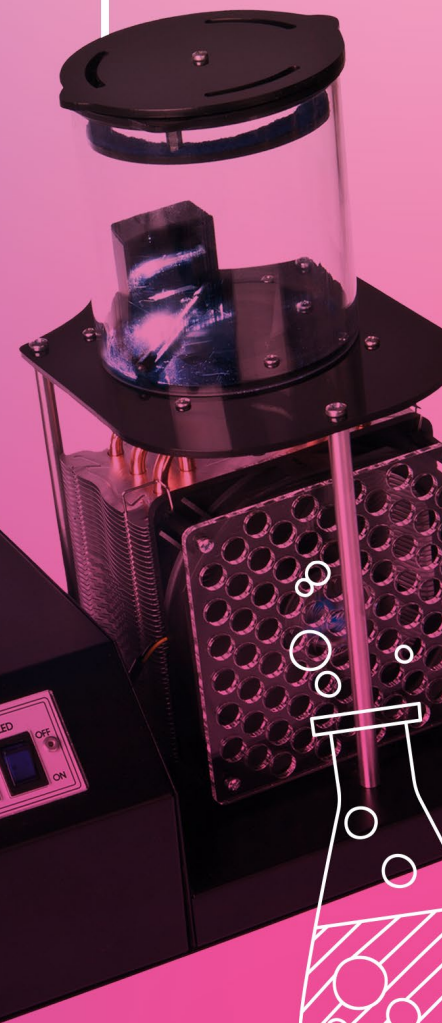




MOTIC STELLAR
MICROSCOPES



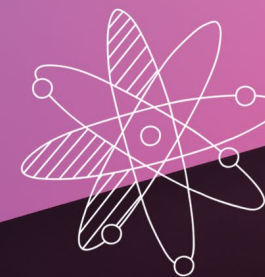
LASCELLS CLOUD
CHAMBER



BACK TO SCHOOL

SLS SELECT EDUCATION PRODUCT BROCHURE

www.science2education.co.uk



Bringing science to education...

SLS Select Education is a specialised division of Scientific Laboratory Supplies (SLS) - the largest independent supplier of scientific laboratory apparatus, chemicals and services to schools, universities and industries in the UK. SLS Select Education benefits from a global supply portfolio ensuring our customers have access to the widest range of products available to school laboratories.

Our SLS Select Education team are an experienced group focused entirely on supplying and supporting science laboratories in schools and colleges. By working with us, schools can be sure they are getting the best quality products at the most competitive prices.

Join our
reward scheme:

SELECT SAVERS

Free Delivery &
Uncapped Earnings

UK's LARGEST

Independent supplier of scientific equipment apparatus and chemicals.



£7 Million STOCK

Our stockholding is second to none ensuring great levels of customer service both in terms of speed and efficiency.



PRICE MATCH GUARANTEE

Our Price Match Guarantee ensures that you won't find the same quality equipment elsewhere for less.



93%

of customers would recommend us to a friend or colleague.



30+ Years EXPERIENCE



Whether you're looking to refit, refurbish, or restock your laboratory, when you work with us, you work with a company with over 30 years' experience.

9 Territory MANAGERS



Our Territory Sales Managers are available to provide on-site support and advice from every aspect of your project from concept to completion.

70+ RECOGNISED BRANDS



We have over 70 well-recognised brands within our education portfolio and access to a further 300+ industrial grade suppliers.



www.science2education.co.uk

Welcome back to the new school year and our Back to School brochure

Over the summer we have been thinking about you, and have gone through our portfolio to pick selected items from our range of reputable suppliers, that we think will be beneficial to your Science department. To help your budget stretch that little bit further, we have some fantastic offers and everyday great prices on products from world renowned manufacturers including Motic, OHAUS, Nickel Electro, Bio-Rad and Cole-Parmer.

Don't forget to take advantage of our Select Savers loyalty scheme, our Price Match Guarantee and most importantly – our helpful and knowledgeable team! Our Territory Sales Managers and Tech Support team have a wealth of experience from working in schools and are on hand to offer advice, guidance and product demonstrations.

We hope you can put your wall planner to good use – and happy browsing!

These offers are valid until 31st December 2024

Product Highlights



Pg 5

Motic Stellar Microscopes



Pg 6

Bio-Rad pGLO Bacterial Transformation Kit



Pg 11

OHAUS ST Series Waterproof Pen pH Meters



Pg 12

Cole-Parmer EM Series Electromantles



Pg 18

Lascells Ripple Tank MkIII



Pg 19

IPC Irwin Timer Scaler & Frequency Meter

Here to Support You! Tech Guides Available Online

As experienced technicians retire, someone needs to step in to ensure their invaluable knowledge is passed on to help newcomers navigate their roles with confidence and competence. As the vast majority of our team is comprised of former technicians, it's only natural that these individuals would create a valuable resource hub for technicians at every stage of their careers. From setting up school science clubs and practical experiments, to guiding equipment purchases and maintenance practices, our website extends far beyond its e-commerce functionality.

Browse our past Tech Guides online at:
www.science2education.co.uk/news

Want to stay up-to-date with our latest news and resources? Subscribe to our mailing list and receive a copy of our popular tech guides straight to your inbox. Plus, you'll be the first to know about our latest competitions!



Monthly Web Offers – Are You Missing Out?

At SLS Select Education, we review our pricing regularly, ensuring you have access to the most competitive prices in the school science market, with monthly refreshed deals on a variety of school science equipment.

View our current offers online at
www.science2education.co.uk/promotions



Technicians' Summer Conference 2024

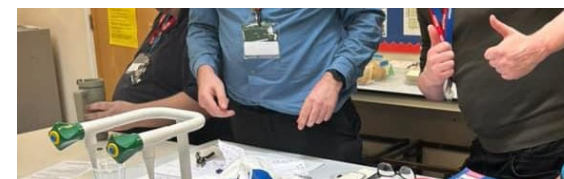
We recently attended the Technicians' Summer Conference in Birmingham, which was attended by over 230 technicians from across the UK. SLS Select Education offered 4 workshops, with the support of our suppliers – including leading brand of physics equipment, Lascells.



FREE Chocolate Bar with Every Order – Continues!

Enjoy a sweet treat from us with every order placed in 2024! Stock up on essential lab equipment and supplies, and you will automatically receive a chocolate bar.

Treat yourself to a delicious reward on us all year around. Order now and savour the sweetness!



On Site Demonstrations

We offer in school demonstrations where required, which can be delivered by your Territory Sales Manager. If you require a demo, or would like us to support at your own event or technicians meeting – please contact us.

Visit our Meet the Team page to find your local Territory Sales Manager:
www.science2education.co.uk/meettheteam

Ravencourt Biological Microscope



This microscope offers excellent features at an affordable price. The coaxial focusing mechanism makes it easy to adjust both finely and coarsely. It comes with an adjustable LED illumination system for clear viewing, and also includes a rotating disc-type diaphragm with five sizes for adjusting light transmission. The 10x wide-field eyepiece has a pointer and is positioned at a comfortable 45° angle on the 360° rotating monocular head. With a revolving nosepiece, you can easily switch between 4x, 10x, and 40x objectives for different magnifications. The stage, measuring 9.5 x 9.5cm, is equipped with stage clips to secure slides in place and a pre-set rack stop to prevent damage to objectives.

- 10x WF eyepiece
- 360° rotating monocular head
- Adjustable LED illumination
- 4x, 10x and 40x revolving nosepiece and disc diaphragm
- Coaxial focusing mechanism with coarse & fine adjustment
- Mains or battery powered (3 x AA batteries included)
- Dimensions: 300 x 160 x 120mm
- Includes spare LED bulb and dust cover

NEW LOW PRICE



Code	Pack	List Price, £
ZMS001	Each	84.50

Motic Stellar Microscopes



Introducing Motic's new Stellar microscope range, ideal for Key Stage 5 teaching labs and exclusive to SLS! These microscopes feature a number of intuitive design features which make them perfectly designed for classroom education settings.

- Fully 360° rotatable head ensures a single microscope can be easily shared during group activities
- Built in carry handles for easy transportation
- Integrated slide storage allows activities to be set up before students enter the classroom
- Sleek and tidy cable and plug storage allows more microscopes to be packed away into small classroom or prep room spaces



Exclusive to SLS Select Education

Code	Description	Pack	List Price, £
MIC8012	1-B binocular 4X, 10X, 40X	Each	370.00
MIC8014	1-B binocular 4X, 10X, 40X, S-Oil	Each	420.00
MIC8016	1-T trinocular 4X, 10X, 40X	Each	500.00
MIC8018	1-T trinocular 4X, 10X, 40X, S-Oil	Each	550.00

Bio-Rad pGLO Bacterial Transformation Kit

BIO-RAD

With this educational kit, students use Bio-Rad's exclusive pGLO plasmid to transform bacteria to express the green fluorescent protein (GFP) gene from the bioluminescent jellyfish *Aequorea victoria*, which causes the bacteria to glow green under UV light. The same procedure is used to create "designer proteins", which have led to the explosion of new health treatments, agricultural applications, and environmental solutions. Use this kit to illustrate the concept of DNA > RNA > Protein > Trait and the roles that external and internal factors play in gene regulation - all within the exciting context of genetic engineering.

- Hands-on genetic engineering - transform bacteria with a jellyfish gene
- Visible, dramatic phenotype - transformants glow green under UV light
- Teaches gene regulation - GFP expression is under the control of an arabinose-inducible promoter
- Reinforces maths skills - students calculate transformation efficiency
- Consumable reagents for kit includes: pGLO plasmid, *E. coli*, nutrient broth, transformation solution, ampicillin, arabinose - for educational use only



Code	Description	Pack	List Price, £
ELE1496	pGLO bacterial transformation kit	Each	122.00
ELE1418	Transformation reagent refill kit	Each	66.72

Bio-Rad Crime Scene Investigator PCR Basics Kit

BIO-RAD

This kit allows students to simulate DNA profiling as it is commonly used in forensic laboratories. The laboratory activity introduces the concepts of PCR, which is widely used in forensics, diagnostics, and archaeological procedures. It is performed without the need for complex genomic DNA extraction steps.

With this kit, students:

- Perform real-world DNA profiling
- Use PCR to amplify multiple DNA samples
- Use agarose gel electrophoresis to visualise results
- Use fast PCR (55 minutes) and fast DNA gel (10 minutes) protocols
- Complete all activities in two 45-minute sessions
- Consumable refill kit contains: PCR master mix, primers, crime scene and suspect DNA samples, and more - for educational use only



Code	Description	Pack	List Price, £
ELE1428	Crime scene investigator PCR basics kit	Each	169.00
ELE1430	Crime scene investigator PCR basics refill kit	Each	143.37

SLS Flowgen Electrophoresis Teaching Sets



A cost effective, high quality method of teaching electrophoresis. It allows one teacher to instruct up to 12 students on the principles of electrophoresis and cast and run their own gels simultaneously. This system incorporates one large gel tank with 6 individually sized smaller gels. The system connects up to one power supply for economy. Leak proof casting dams allow easy casting of gels. UV and safe light transmissible trays allow transfer of the gels to a gel viewer or gel documentation system for viewing of the electrophoresis separation and analysis of the gels.

Up to
10% OFF



- Gel size: up to six 7 x 7cm gels
- Buffer volume: 1.2L
- Unit dims, w x l x h: 23 x 39.5 x 9cm
- Sample range 8 to 96 (192 with 12 additional 16 well combs purchased separately)
- CE marked

Code	Description	Pack	List Price, £	Offer Price, £
ELE2400	Teaching set	Each	305.00	289.75
ELE2402	Teaching set with NANOPAC-300 power supply	Each	770.72	693.65
ELE2404	Teaching set with NANOPAC-300 power supply, agarose, buffer, load dye and DNA markers	Each	799.64	719.68

Blue-Ray Biotech TurboCycler Lite

2+ YEARS



Versatile capabilities at an affordable price, making it an ideal choice for routine PCR tasks. Features include intuitive operation interface, gradient optimisation, advanced slow ramp temperature control and adjustable lid temperature. Ramp rate can be precisely controlled down to 0.1°C/s. Temperature can be set between 35 and 120°C for virtually any type of experiment.

- Sensitive touch keypad and an intuitive graphical interface
- Thermal gradient function allows fast PCR optimisation for new experiments
- Dust and aerosol proof keypad can be easily disinfected
- Auto restart function



NEW!
25% OFF



Code	Pack	List Price, £	Offer Price, £
MOL2704	Each	2904.00	2178.00

SLS Lab Pro Personal Benchtop Autoclaves



Brought to you by the makers of the classroom favourite Prestige autoclave, we present the SLS Lab Pro range! The SLS Lab Pro personal autoclaves are ideal for general laboratory use. They can be used for sterilising media (SLS1864), glassware and instruments. These autoclaves are easy to operate with simple one touch operation and fast cycle times. There is a choice of models with either 9 or 12L capacities and sterilising temperatures ranging from 121 to 134°C.

- Lightweight and portable
- Simple one touch operation
- Available in 9 or 12L capacities



Code	Description	Capacity, L	Pack	List Price, £	Offer Price, £
SLS1860	Standard autoclave	9	Each	848.40	763.56
SLS1862	Gauged autoclave	12	Each	1049.00	996.55
SLS1864	Media autoclave	12	Each	971.00	922.45
SLS1866	Autoclave with printer	9	Each	1111.75	1056.16

SLS Select Petri Dishes



High quality, disposable Petri dishes, aseptically manufactured in clear polystyrene to the highest standards.



10% Off Biology Essentials

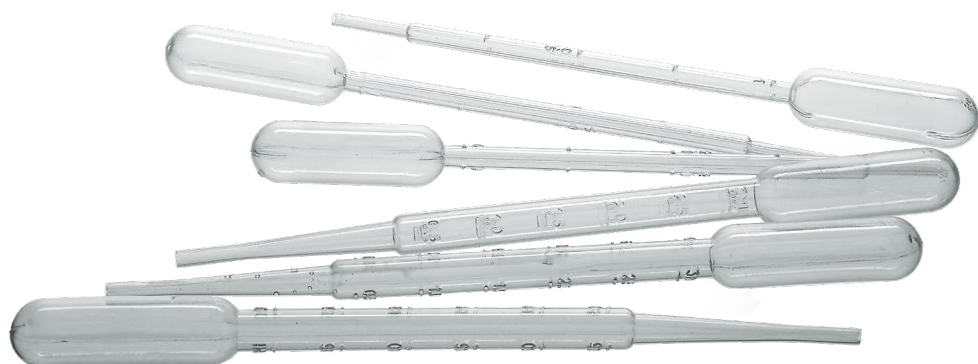


Code	Dims, Ø x h, mm	Vent	Pack	List Price, £	Offer Price, £
353004SP	60 x 15	None	20	9.12	8.21
SSLS2000	90 x 15	1	20	1.54	1.39
SLS2000	90 x 15	1	500	40.74	36.67
SSLS2002	90 x 15	3	20	1.35	1.22
SLS2002	90 x 15	3	500	38.36	34.52
PET3004	90 x 15	None	825	90.20	81.18
PET3007	140 x 20	3	120	70.48	63.43

SLS Select Pasteur Pipettes



Graduated, plastic pasteur pipettes are an essential item for the safe and simple handling of liquids in every Biology laboratory. Supplied in both non-sterile and sterile options - perfect for use in GCSE and A Level microbiology practicals.



15% Off Biology Essentials

Code	Capacity, mL	Sterility	Packaging	Pack	List Price, £	Offer Price, £
PIP4200	1	Non sterile	Bulk	500	6.23	5.30
PIP4202	1	Sterile	Sleeves of 20	500	13.15	11.18
PIP4204	1	Sterile	Single	500	16.62	14.13
PIP4206	3	Non sterile	Bulk	500	7.00	5.95
PIP4208	3	Sterile	Sleeves of 20	500	13.84	11.76
PIP4210	3	Sterile	Single	500	18.21	15.48

SLS Lab Basics Single Channel Pipettes

3 YEARS



The ergonomic design of this pipette ensures a lightweight feel and smooth plunger movement, making it comfortable for extended use. It features a click-stop system for precise volume selection, and the colour-coded design allows for easy identification. Calibration conforms to EN-ISO 8655 standards, ensuring high accuracy and precision, and a detailed calibration report is enclosed with every pipette.

Visit our website to see our range of compatible pipette tips.

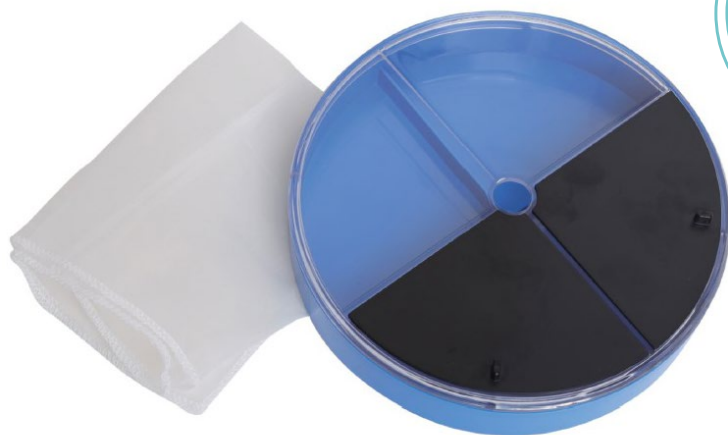


Code	Volume Range, µL	List Price, £
SLS4900	0.1 - 2.5	52.96
SLS4902	0.5 - 10	52.96
SLS4910	2 - 20	50.85
SLS4904	5 - 50	52.96
SLS4906	10 - 100	52.96
SLS4912	20 - 200	50.85
SLS4908	100 - 1000	52.96
SLS4914	500 - 5000	52.98
SLS4916	1000 - 10000	52.98

Choice Chambers

NEW

Unlock the secrets of animal behaviour, ecology, and habitat preferences with unparalleled precision using our choice chamber. Featuring a transparent lid and four compartments, it is expertly designed for scientific exploration. This innovative, yet simple tool empowers students in their ecological studies, by offering a controlled environment that can be effortlessly sectioned into quarters, facilitating precise experimentation with light/dark and wet/dry variables. The choice chamber also features a single access hole allowing introduction of individual specimens, before securely closing the lid and making observations.



10%
OFF

Code	Pack	List Price, £	Offer Price, £
CHA1014	5	31.00	27.90

Polygram Pre-Coated TLC Plates

Thin layer chromatography (TLC) is used to separate individual components from a mixture, depending on the polarity of each compound. The polygram pre-coated TLC plates are perfect for use in A level biology practicals, most popularly for separation of amino acids and calculation of R_f values but can also be used for wider applications, such as crime scene investigations to make an engaging and multi-disciplinary activity, or in A level chemistry.

General purpose silica gel coated plates with average pore diameter 6mm and layer thickness of 0.25mm.

Contains fluorescent indicator. The carrier sheet is 0.2mm polyester and is resistant to all organic solvents commonly used in TLC.



Code	Size, mm	Pack	List Price, £
BB1148	40 x 80	50	82.85
BB1150	50 x 200	50	145.10

OHAUS ST Series Waterproof Pen pH Meters

NEW



Introducing OHAUS' new range of pH pen meters. Bringing you the quality and reliability of the OHAUS brand, to a conveniently designed pen meter which is perfect for secondary classroom use - ideal for key stage 4. The ST series of pH meters are waterproof, ergonomical and simple to use - whilst delivering accurate measurements across the 0.00 - 14.00 pH range.

NEW!



Code	Model	Resolution, pH	Accuracy	Dims, mm	Pack	List Price, £
PHM5020	ST10	0.1	±0.1 pH	183 x 45 x 35	Each	46.00
PHM5022	ST20	0.01	±0.05 pH	185 x 42 x 37	Each	104.81

Accessories

Code	Description	Pack	List Price, £
PHM5024	Replaceable pH electrode for ST10	Each	25.28
PHM5026	Replaceable pH electrode for ST20	Each	53.28

Cole-Parmer® MP-200D Digital Melting Point Apparatus

3 YEARS

Cole-Parmer®

Designed for maximum safety and ease of use. Select, measure, and display the temperature digitally, ensuring accuracy and avoiding the need for a glass thermometer. Test two samples simultaneously, viewing the melt via a magnifying lens with built in illumination. Set a plateau temperature for initial warm up – unattended warm up time frees up the user until the plateau temperature is reached. Heating rate continues at 2°C after the warm up, slowly reaching the melt temperature for greater accuracy.

- Easily view the melt via magnifying lens with built in illumination
- Be more productive – test two samples simultaneously
- Extend the back feet for the optimal viewing angle
- 3 digit LED display
- Supplied with 100 x capillary tubes (open at one end)



Code	Pack	List Price, £	Offer Price, £
MEL2104	Each	754.95	679.46

Cole-Parmer® EM Series Electromantles



Controlled and grounded electromantles with a built in power regulator with dial markings from 1 to 10, and safety earth (ground) screen. Ventilation slots keep the exterior safe to the touch. The replaceable, flexible, coiled heating element is suspended within a thermal insulating cartridge to provide maximum heat transfer and support.



Up to
10% OFF

- Stainless steel grounding screen provides added protection against shock
- Durable, chemical resistant polypropylene housing with ceramic fibre insulation
- Double fused
- Include a single support rod clamp that accepts a 1/2" rod
- Use with round bottom flasks

Code	Capacity, mL	Power, W	Pack	List Price, £	Offer Price, £
HEA5120	50	60	Each	343.53	309.17
HEA5122	100	60	Each	355.26	319.73
HEA5124	250	150	Each	357.40	321.66
HEA5126	500	200	Each	405.47	375.00
HEA5128	1000	300	Each	436.81	393.13
HEA5130	2000	500	Each	788.96	710.06
HEA5132	3000	500	Each	745.00	670.50
HEA5134	5000	800	Each	661.82	595.64

SLS Lab Basics Hotplate Stirrer



The SLS Lab Basics hotplate stirrer brings you SLS quality at an affordable price. Featuring a stainless steel stirrer with a corrosion resistant ceramic coated hotplate. It is perfect for use in the prep room and classroom alike.



10%
OFF

- Heating temperature up to 280°C
- Stainless steel with ceramic coated hotplate (135mm Ø) resists corrosion
- LED display shows temperature and speed
- 50°C HOT warning indicates residual hotplate temperature
- ABS chemical resistant casing
- Free PT1000 probe (SLS4803) with every order – shipped separately

Code	Pack	List Price, £	Offer Price, £
SLS4780	Each	224.34	201.90

Simple Distillation Kit

A self contained kit containing all of the jointed glassware necessary to conduct simple distillation. Joint sizes 19/26.

Comprises of the following:

- 500mL round bottom flask
- Still head with thermometer support
- 300mm Liebig condenser
- Receiver adaptor
- 3 x joint clip, 19/26

25%
OFF



Code	Pack	List Price, £	Offer Price, £
QF2002	Each	71.29	53.47

Quickfit® Microscale Chemistry Kit



Designed to perform organic chemistry experiments, but on a much smaller scale. Reducing the scale lowers the cost - smaller amounts of reagents, lower disposal costs and less clamping equipment. Smaller amounts of hazardous chemicals also means safer handling. All pieces also offer the quality of Quickfit® ground glass joints, screwthread connectors and PYREX® borosilicate glass. The time taken to complete experimental procedures is vastly reduced, and many assemblies can be constructed from the glassware including reflux, distillation, moisture sensitive reactions, and fractional distillation. Spares available upon request.



10%
OFF

- Jacketed condenser
- Air condenser
- Thermometer adapter
- Still head vacuum receiver
- Drying tube
- 25mL round bottom flask
- 10mL round bottom flask
- 25mL Erlenmeyer (conical) flask
- 10mL Erlenmeyer flask
- 25mL pear shaped flask
- 10mL pear shaped flask
- Gratnells tray with foam inserts and instruction booklet

Code	Pack	List Price, £	Offer Price, £
SEML1	Each	222.14	199.93

Gas Syringe

100mL ground glass syringe. Extremely useful for measuring and transferring fluids and gas samples, made of glass, sealed in individual pack, prominent calibration markings assures accurate measurements. Nozzle diameter 8mm.



 **Best selling product**



Code	Description	Pack	List Price, £
SYR1001	Gas syringe	Each	17.98
BB1160	100mL gas syringe holder	Each	34.57

Hoffman's Voltameter with Electrodes

Hoffman electrolysis apparatus with PTFE stopcock for mess free filling and draining, made of borosilicate 3.3 grade glass. When paired with a clamp and stand this apparatus provides an effective and quantifiable method by which to perform electrolysis of water into hydrogen and oxygen.

- Includes Hoffman electrolysis apparatus, 2 x carbon electrodes in rubber stoppers, 2 x platinum electrodes in rubber stoppers, and 2 x PTFE stopcocks (stand sold separately)
- Borosilicate 3.3 grade glassware
- Glassware clearly labeled
- Requires 12V power supply

10% OFF



Code	Pack	List Price, £	Offer Price, £
CH0740B	Each	47.73	42.96

Stand

Metal stand with support clamp for use with Hoffman's voltameter. Supplied with 600mm rod.


Code	Pack	List Price, £
CH0740FN	Each	18.84

Molymod Molecular Model Student Organic Set

molymod®

Molymod molecular models are a classroom favourite for teaching complex chemical structures in a way that is memorable and enjoyable for all students - especially those with a preference for visual and kinaesthetic learning. We offer the full range of Molymod products, with this kit being designed specifically for teaching organic chemistry to A level. 50 atoms supplied in one 4 compartment box.

Contains: 20 hydrogen (I), 12 carbon (IV), 6 oxygen (II), 4 nitrogen (III, IV), 2 sulphur (IV, VI), 1 phosphorus (IV), 4 halogen (I), 1 metal (I); links: 26 medium grey, 12 long flexible, 26 short.

 **Best selling product**



Code	Pack	List Price, £
MMS008	Each	13.43

Ravencourt School Event Timer

1 YEAR



Perfect for schools.

- Uncomplicated 100th second timer
- No alarm or beeper
- No clock
- Colour coded buttons for easy reference
- Start-stop-reset
- Times to 9hr 59m 59.99s
- Large clear display
- Safety wrist cord (will not fit over head)
- Battery securely fitted behind back casing



20% OFF

Code	Pack	List Price, £	Offer Price, £
ZET383	Each	5.92	4.74

QMP Acid and Alkali Storage Cabinets



These storage cabinets enable safe and identifiable storage for caustic materials in the prep room. These cabinets are available in various sizes including floor cabinets, wall mounted and mobile units.

- No snag handles with 2-point locking
- Supplied with warning stickers
- Adjustable spill-retaining shelves with UDL of 70kg
- Integral liquid-tight sump (except wall mounted cupboards)
- Wall cupboards are pre-drilled for mounting (fixings not included)
- Not recommended to store acids and alkalis together in a single unit as corrosion may occur
- Extra shelves available please see website
- Powder coated with white Germ Guard Active Technology paint
- Reaction to Fire Classification EN 13501-1



Code	Description	Dims, w x d x h, mm	Pack	List Price, £	Offer Price, £
SAF8200	Floor standing	900 x 460 x 1800	Each	515.12	463.60
SAF8202	Floor standing	1200 x 460 x 1800	Each	610.05	549.05
SAF8204	Floor standing	460 x 460 x 900	Each	265.79	239.21
SAF8206	Floor standing	900 x 460 x 900	Each	299.88	284.89
SAF8208	Floor standing	350 x 300 x 700	Each	222.76	200.48
SAF8210	Floor standing	900 x 460 x 700	Each	312.61	281.35
SAF8212	Mobile	900 x 460 x 1040	Each	503.73	453.36
SAF8214	Mobile	900 x 460 x 840	Each	475.89	428.30
SAF8216	Wall mounted	570 x 255 x 850	Each	296.17	266.55

Envair Educational Fume Cupboards



Introducing the new range of TCS educational fume cupboards.

- Fixed ducted: fixed in position, they extract harmful fumes with 100% exhaust to the atmosphere and filters that don't degrade. Low running costs and no need for annual filter replacements/consumable changes.
- Semi-mobile ducted: allow demonstrations to be visible from all angles, they move up to 2m, lock into a docking station with necessary connections, and can be repositioned against a wall after use. 100% exhaust with low running costs with no need for annual filter replacements/consumable changes.
- Mobile recirculating: 360° visibility with glass panels, they can move between labs and classrooms, secure to a docking station with necessary connections, and then be repositioned against a wall after use. Air is recirculated via an integral fan and carbon filter.
- In accordance with CLEAPSS Guide G9 – Fume Cupboards in Schools
- An annual maintenance service is available



Contact your Territory Sales Manager for a delivery quote; a site survey may be required for fixed ducted systems

Code	Description	Dims, w x d x h, mm	Pack	List Price, £
CAB7102	Fixed ducted	1000 x 715 x 2070	Each	3214.00
CAB7334	Fixed ducted	1200 x 715 x 2070	Each	3430.00
CAB7356	Semi mobile	1000 x 715 x 2070	Each	3615.00
CAB7358	Semi mobile	1200 x 715 x 2070	Each	3930.00
CAB7428	Mobile recirculating	1000 x 715 x 1950	Each	4939.00
CAB7430	Mobile recirculating	1200 x 715 x 1950	Each	5286.00



Mindsets SEP Energy Meter



Many students find the concept of energy challenging. The SEP energy meter offers various opportunities for practical activities across physics. It allows students to measure energy directly, they can grasp an important aspect of energy that it is a quantitative value used to solve problems and answer real questions. Can be powered over USB or using a 5V mains adaptor (included). The SEP energy meter can be used without a computer.

- Current range: $\pm 7A$ (current can flow in either direction)
- Voltage range: $\pm 25V$
- Log memory: 2500 samples
- Log sample period: 1, 2, or 4 seconds



Code	Pack	List Price, £	Offer Price, £
SESEP044	Each	80.80	72.72

Immersion Heater

This fully sheathed miniature heater is tailored for use with our metal block calorimeters. It has a heating element enclosed in a stainless steel tube with two flying leads, having heat resistant insulation, coming out of the sealed tube body for electrical connections.

- Operates on 12V and rated 48W
- Dimensions: 100 x 12mm (L x \varnothing)



Code	Pack	List Price, £	Offer Price, £
EDU1007N	Each	25.52	18.53

Lascells Ripple Tank MkIII


ASCELLS

This compact unit provides an excellent way to demonstrate wave properties of reflection, diffraction, refraction, and interference. It is self-contained, with a translucent viewing screen that hinges away to reveal a water tank with a multi-faceted 'beach' to minimise reflections.

A high-intensity built-in LED can sync with the waves for stationary images, or be switched for user independent control of the wave and strobe frequencies giving the impression of wave motion on the screen. It includes all necessary dippers, lenses, and barriers, neatly stored inside the unit.



- Dims, l x w x h: 225 x 170 x 143mm
- Weight: 1.07kg
- Input voltage: regulated 12V DC +pin
- Current requirement: 400mA
- Strobe frequency range: 30 - 500Hz nominal



Never beaten on price!

Code	Description	Pack	List Price, £
PY3098	Ripple tank MkIII	Each	121.88
PY3099	Frequency counter for ripple tank	Each	18.97

LED Battery Powered Raybox

An economical metal ray box which delivers white light, running much cooler than conventional bulb models using ultra-bright LED technology. It comes with a slit plate and its own battery power source (requires 2 x AA batteries, not included), eliminating the need for bulky power packs and reducing the reliance on electricity sockets in your lab.



Up to
30% OFF

Code	Description	Pack	List Price, £	Offer Price, £
EDU1194	LED raybox	Each	22.56	15.79
EDU1196	Spare metal slits 76 x 45mm	Each	1.86	1.30
PH0600LEDBATT	Spare battery pack	Each	6.94	5.89

IPC Irwin Timer Scaler & Frequency Meter



10% OFF

The IPC Irwin scaler timer combines the functions of a timer, ratemeter, and frequency meter into one unit. In timer mode, it ranges from a simple stopwatch to use in dynamics experiments with air tracks. The scaler and ratemeter modes are used for radioactivity experiments, e.g background radiation measurement, half-life determination, inverse square law and absorption investigations.

As a frequency meter, it accepts diverse waveforms and can determine the rotational frequencies of a stroboscope or display the frequency of a signal generator's waveform.



- Four, 7 segment LED digits, 13mm high
- Built into a robust metal case with a durable powder coated finish
- Users will require GM tube stand PY2039 to operate a ZP1481 GM tube (261-007)

Code	Pack	List Price, £	Offer Price, £
EL10440	Each	353.50	318.15

ZP1481 Geiger-Müller Tube

The ZP1481 Geiger-Müller tube is designed for detecting alpha, beta and gamma radiation and specifically for use with school radioactive sources. This Geiger-Müller tube also meets the criteria for the routine radiation leakage checks. A plastic cap protects the window.

SAVE over £50



Code	Pack	List Price, £	Offer Price, £
261-007	Each	554.00	500.00

Lascells Switched Power Supply



LASCCELLS



This switched power supply provides a smoothed 5A (continuous 4A) AC or DC voltage, in 2V increments from 0 - 12V, suitable for all laboratory applications. An internal mechanism disconnects the output when changing the voltage setting to protect the switch contacts from overload.

The voltage can be locked at any setting, for protection of components in the circuit, using an Allen screw on the front panel. Housed in a robust powder-coated case with an integral carrying handle, but remains light, it is designed to fit four units in a single Gratnells storage tray.

- Output voltage: 0 to 12V DC in 2V increments capacitor smoothed; 0 to 12V AC in 2V increments
- Output current: 5A max 4A continuous



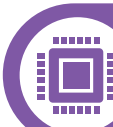
Code	Pack	List Price, £	Offer Price, £
PY3001	Each	161.72	137.46

BrightSparks4Kids Electricity Kit, Secondary



Each module is safe, robust and clearly shows its component name and electrical symbol. All components are strong and securely fixed and have been specifically designed with safety in mind with non-slip rubber feet. Intended for low voltage battery use only, do not connect to any mains electricity supply. Contains all the components you need to effectively design and create more complex electrical circuits.

- 4 x battery cell modules (short circuit protected)
- Blocking diode
- Digital multimeter
- Toggle switch module, push switch module, two way switch module
- 2 x bulb modules (series & parallel investigations)
- White LED module, motor module (low inertia solar type) and buzzer module
- Variable resistor module (100R 5W), 2 x 100R 3W fixed resistor modules



Complete circuit kits

- 10 x stackable plug in connecting leads and 2 x crocodile adaptor clips for conductors & insulators experiments
- CD-ROM with teaching guide & printable resources
- Supplied in Gratnells transparent storage tray

Code	Description	Pack	List Price, £
EDU1030	Secondary electricity kit	Each	135.12
EDU1030M	Secondary electricity kit with magnetic back	Each	167.60

Lascells Cloud Chamber



ASCELLS

The Lascells cloud chamber, with an innovative design, is a perfect alternative to the unreliable and time-consuming dry ice methods. The self-contained, thermoelectrically cooled chamber eliminates the need for dry ice. Setup is straightforward, requiring only the addition of isopropyl alcohol and a connection to a mains socket. It features an integrated power supply, peltier cell and is illuminated by a high-intensity LED. This chamber visualises radioactive decay, revealing the unseen aspects and exciting students with the opportunity to see this happening.



10%
OFF

Code	Description	Pack	List Price, £	Offer Price, £
PY3104	Cloud chamber	Each	498.89	449.00
PY3106	Spare cloud chamber source	Each	11.00	9.90

Lascells Battery Eliminator



ASCELLS

The Lascells battery eliminator is a lightweight and compact power supply designed to save you money by eliminating the need to purchase batteries for electricity work. It offers a stepped output that covers all key battery combinations from 1.5V to 12V, delivered via 4mm safety sockets with a maximum current of 1A. The unit is both overload and short-circuit protected, ensuring safety and reliability. It provides consistent output at battery voltages and eliminates the need for batteries in many applications. It is ideal for extended experiments where battery life could be an issue.



15%
OFF

Code	Pack	List Price, £	Offer Price, £
EL1880	Each	33.00	28.05

Lascells Digital Ammeters


ASCELLS

Spend less time changing batteries with Lascells digital ammeters. These digital bench meters are housed in robust ABS and PVC cases. The ammeter features ~50 minute 'auto off' circuitry to conserve battery life and an LED indicator prompting battery change when necessary. Range: 0 to $\pm 10A$ DC.



Code	Pack	List Price, £	Offer Price, £
PY3010	Each	33.17	28.19
PY1092	10	271.00	230.35
PY3011	15	470.07	399.56

Lascells Digital Voltmeters


ASCELLS

Spend less time changing batteries with Lascells digital voltmeters. These digital bench meters are housed in robust ABS and PVC cases. The voltmeter features ~50 minute 'auto off' circuitry to conserve battery life and an LED indicator prompting battery change when necessary. Range: 0 to $\pm 20V$ DC.



Code	Pack	List Price, £	Offer Price, £
PY3008	Each	33.17	28.19
PY1090	10	271.00	230.35
PY3009	15	470.07	399.56

Bunsen Burners

Nickel plated burner tube with rotatable air regulator and cylindrical connector. Mounted on pressure die casted base.

Best selling product



Code	Size, mm	Gas	Pack	List Price, £
EDU1081	11	Natural gas	Each	13.00
BUR3000	13	Natural gas	Each	4.58
EDU1080	11	Liquefied petroleum gas	Each	9.69
BUR3002	13	Liquefied petroleum gas	Each	6.97

Rubber Tubing

Soft, flexible rubber tubing. Supplied with a variety of bore and wall thicknesses to suit the needs of your lab. When cut to length, C758-8 is perfect for use with bunsen burners.



Code	Bore, mm	Wall Thickness, mm	Pack	List Price, £	Offer Price, £
C758-5	5	1.5	10m	9.12	6.38
C758-4	4	1	10m	9.18	6.43
C758-6	6	1.5	10m	9.78	7.82
C758-7	7	1.5	10m	11.95	8.37
C758-8	8	2	10m	12.63	10.10
C758-10	10	2	10m	19.09	15.27
C758-12	12	2.5	10m	22.33	15.63

Retort Bases

Rectangular retort base made of corrosion resistant, powder coated pressed steel. For superb stability for experiments and setups.

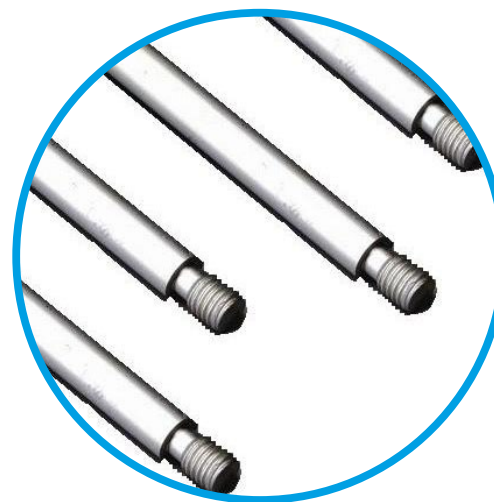
- Features rubber strips to protect surfaces
- Tapped hole for a 10 x 1.5mm threaded rod
- Durable and sturdy construction



Code	Dims, mm	Pack	List Price, £	Offer Price, £
BASE160T	160 x 100	Each	6.93	4.85
BASE200T	200 x 125	Each	10.13	7.09
BASE250T	250 x 160	Each	14.28	10.00

Retort Rods

A range of mild steel and aluminium retort rods, with a precisely cut 10 x 1.5mm thread on one end. Compatible with most popular brands of retort base and an essential item for any school laboratory.




Code	Material	Size, mm	Pack	List Price, £	Offer Price, £
RDMS0500	Mild steel	500	Each	2.85	2.28
RDMS0600	Mild steel	600	Each	3.40	3.06
RDMS0750	Mild steel	750	Each	2.96	2.66
RDAL0500	Aluminium	500	Each	4.50	3.15
RDAL0600	Aluminium	600	Each	5.31	3.72
RDAL0750	Aluminium	750	Each	7.26	5.08
RDAL1000	Aluminium	1000	Each	9.00	6.30

DURAN® Silicone Lids



These stretchy silicone lids provides a sustainable alternative to using cling film, foil or a parafilm to cover glassware. Their elasticity allows them to seal various vessel openings, whether square or round, and a larger tab serves as a writable surface. They are manufactured from autoclavable and microwave-safe silicone, ensuring durability and reusability. However, with pressure changes during autoclaving, these lids may loosen or tear and are thus not recommended for in-autoclave applications fitted to glassware.

- Resistant to chemicals and heat
- Suitable for temperatures ranging from -40 to +180°C

 **Reduce your lab waste**



Code	Size	Colour	Dims, Ø x h, mm	Pack	List Price, £
BOT1248	Small	Pink	22.5 x 42.2	Each	1.90
BOT1258	Small	Cyan	22.5 x 42.2	Each	1.90
BOT1260	Small	Green	22.5 x 42.2	Each	1.90
BOT1262	Medium	Pink	63.7 x 22.5	Each	2.46
BOT1264	Medium	Cyan	63.7 x 22.5	Each	2.46
BOT1266	Medium	Green	63.7 x 22.5	Each	2.46
BOT1268	Large	Pink	83.7 x 23.2	Each	3.13
BOT1270	Large	Cyan	83.7 x 23.2	Each	3.13
BOT1272	Large	Green	83.7 x 23.2	Each	3.13

Plastic Tray Trolleys

Robust plastic trolleys for everyday use in science labs.

- Lightweight
- Fitted with hardwearing castors, 2 of which are braked
- Built from heavy duty construction
- Specially formed uprights and ribbed plastic shelving

10% OFF



Code	No. of Shelves	Dims, w x d x h, mm	Capacity, kg	Pack	List Price, £	Offer Price, £
TR01144	2	460 x 750 x 940	100	Each	111.11	99.99
TR01148	2	513 x 990 x 970	250	Each	186.31	167.68
TR01140	3	460 x 750 x 980	150	Each	135.00	121.50
TR01150	3	513 x 990 x 1010	200	Each	234.17	210.75
TR01156	4	460 x 750 x 1260	150	Each	188.88	169.99

Nickel Electro Clifton® NE1D Digital Unstirred Water Baths



A smaller, more economical Clifton® model that does not compromise on the Clifton® features and quality. Simple digital controller for setting temperature with 1°C divisions. Designed for immersion of flasks, bottles and racks in a highly stable temperature environment.

- Display/resolution: digital LED/1°C
- Temperature range: ambient +5 to 99°C
- Temperature setting: push button
- Stability/uniformity: ±0.2°C/±0.1°C
- Temperature memory retained even after power off
- Complete with perforated shelf for even heat distribution
- Lids recommended above 60°C (supplied separately)



Each purchase results in a donation to One Tree Planted



Code	Capacity, L	Pack	List Price, £	Offer Price, £
BAT2838	4	Each	381.10	342.99
BAT2840	14	Each	424.79	403.55
BAT2842	22	Each	541.41	487.27

Nickel Electro Clifton® NE2D Digital PID Controlled Unstirred Water Baths



The Clifton® water bath is an excellent choice for any science department. The name is synonymous with quality. They offer digital temperature control and display for precise temperature setting, and every bath is factory-calibrated at two reference points for accuracy.

- Corrosion resistant steel and have an anti-bacterial coating with excellent chemical resistance
- Concealed heaters and sensors ensure no internal obstructions
- Whole bath heating improves heating speed and energy efficiency
- Safety isn't compromised with both over and under temperature alarms and a thermal cut out to prevent boiling dry
- Excellent sustainability aspects - more information can be found on our website



Code	Capacity, L	Pack	List Price, £	Offer Price, £
BAT7022	4	Each	491.00	466.45
BAT7024	8	Each	518.83	492.89
BAT7027	14	Each	488.86	464.42
BAT7032	22	Each	627.70	595.99
BAT7034	28	Each	713.40	677.73

OHAUS Scout® Portable Balances

2 YEARS



10% OFF

Designed for education applications, the OHAUS Scout® with large backlit LCD backed by education software is the ideal balance for your classroom. It is built to endure demanding classroom applications with superior overload protection.

- Faster stabilisation time
- Increased capacity
- Multiple connectivity options
- Stackable design
- The best weighing experience for the next generation classroom



Code	Model	Capacity, g	Readability, g	Pack	List Price, £	Offer Price, £
BAL0030	SKX123	120	0.001	Each	297.91	268.12
BAL0031	SKX222	220	0.01	Each	189.23	170.30
BAL0032	SKX422	420	0.01	Each	227.94	205.15
BAL0033	SKX622	620	0.01	Each	237.53	213.78
BAL0034	SKX1202	1200	0.01	Each	289.12	260.21
BAL0035	SKX2202	2200	0.01	Each	348.37	313.53
BAL0036	SKX421	420	0.1	Each	132.98	119.68
BAL0037	SKX621	620	0.1	Each	144.45	130.00
BAL0038	SKX2201	2200	0.1	Each	194.17	174.75
BAL0039	SKX6201	6200	0.1	Each	260.84	234.76
BAL0040	SKX8200	8200	1	Each	186.00	167.40

Brannan Laboratory Thermometers

2 YEARS



A spirit in glass thermometer for excellent temperature change response. Supplied with a non-roll cap and ring.



SAVE on Essentials

Code	Description	Length, mm	Temp Range, °C	Pack	List Price, £	Offer Price, £
THE5220	Green	150	-10 to 110	Each	1.67	1.50
THE5222	Green	200	-10 to 110	Each	1.84	1.66
THE5224	Green	300	-10 to 110	Each	1.89	1.70
THE5228	Red	205	-10 to 110	Each	1.90	1.71
THE1064	Red	305	-10 to 150	Each	1.94	1.75

JAVAC CC-31ED Vacuum Pump

1
YEAR



Specifically designed for use in school laboratories this general purpose vacuum pump is ideal for use in a variety of experiments including vacuum filtration and bell in a bell jar.

- Double stage oil sealed
- Anti-oil demister to prevent spillage



Code	Pack	List Price, £	Offer Price, £
PUM2900	Each	323.78	291.40

Heavy Wall Rubber Tubing

Soft flexible, heavy walled pressure tubing to fit the inlets/outlets of a vacuum pump (TUB4056)



Code	Size	Bore, mm	Wall Thickness, mm	Pack	List Price, £	Offer Price, £
TUB4050	H3	3	3	10m	23.55	21.20
TUB4052	H5	5	4	10m	43.70	39.33
TUB4054	H6.5	6.5	5	10m	64.62	58.16
TUB4056	H8	8	6	10m	99.22	89.30
TUB4058	H10	10	7	10m	147.12	132.41
TUB4060	H12.5	12.5	8	10m	224.29	201.86

Bollé SWIFT Safety Spectacles



Up to
**25%
OFF**

Affordable safety eyewear, designed to meet essential safety standards, that seamlessly combines design, comfort, and durability. Featuring PLATINUM Lite anti-scratch and anti-fog coating, ensuring crystal-clear vision in all situations. Its well-balanced frame provides daily comfort, while its flexible, contoured, and textured temples ensure optimal lateral protection, fit, and retention. SWIFT is crafted from 31% recycled polycarbonate, and is fully recyclable, with a mono-material design without any metal components.



- Conforms to EN ISO 16321-1
- Thin and flexible temples for enhanced comfort and retention
- Recyclable mono-material design comprising 31% recycled polycarbonate
- Bulk packs of 20 available supplied in eco-friendly packaging to improve sustainability

Code	Lens Colour	Pack	List Price, £	Offer Price, £
SAF3900	Clear	Each	5.05	3.79
SAF3902	Clear	20	101.00	80.80
SAF3904	Smoke	Each	5.05	3.79

Unisex V Neck Cotton Lab Coats



Washable unisex lab coat. Available in a variety of sizes - see website for full range.

- One chest pocket, two hip pockets
- Concealed stud fastening
- One piece back
- 195gsm polycotton
- Embroidering available - contact your Territory Sales Manager for more information; discount applied to lab coats only

25%
OFF



Code	Chest Size, cm	Pack	List Price, £	Offer Price, £
SAF0080	92	Each	21.53	16.15
SAF0082	96	Each	21.53	16.15
SAF0086	100	Each	21.53	16.15
SAF0088	108	Each	21.53	16.15
SAF0090	112	Each	21.53	16.15

CoolMed CMST100 Undercounter Staff Room Refrigerator

2
YEARS

COOLMED

This under counter fridge is perfect for smaller locations. Fitted with movable glass shelves. allowing flexible storage in the staff room.

- Reversible, solid door
- Adjustable legs
- 6 setting temperature control
- Interior light
- Recessed handle
- 3 x removable interior shelves
- 3 x removable door compartments
- Dims, w x d x h: 479 x 447 x 845mm
- Temp range: 2 to 10°C



Code	Pack	List Price, £	Offer Price, £
REF1242	Each	251.00	225.90

CoolMed CMST125 Undercounter Staff Room Fridge Freezer

2
YEARS

COOLMED

This undercounter fridge freezer is fitted with LED lighting for low energy consumption and provides flexible storage, with removable glass shelves. Ideal for staff room use.

- Reversible door
- Adjustable legs
- Freezer compartment 4 star rating
- 6 setting temperature control
- Interior light
- Recessed handle
- Metal backed for optimum safety
- A+ energy rating
- 2 x removable shelves
- 3 x door compartments
- Dims, w x d x h: 479 x 495 x 845mm
- Temp range: 2 to 10°C (fridge); -16 to -24°C (freezer)



Code	Pack	List Price, £	Offer Price, £
REF1244	Each	306.00	275.40

NEW WAREHOUSE FACILITY



NEW FACILITY

Our state-of-the-art National Distribution Centre boasts 48,000m² of storage space – nearly three times our previous capacity

ADVANCED TECHNOLOGY

Investments in a new Warehouse Management System (WMS) and the latest conveyor automation technology will enhance our capacity to process over 2,000 orders per day - two and a half times our previous capability

STRATEGIC LOCATION

The new site offers closer proximity to local and national transportation links

ENVIRONMENTAL IMPACT

With the installation of photovoltaic solar panels, the new site will be capable of generating 300KWh. The building is heated solely by renewable energy using the solar installation with excess sold back to the National Grid

SLS LAB PRO PERSONAL
BENCHTOP AUTOCLAVES

NICKEL ELECTRO CLIFTON®
NE2D DIGITAL PID CONTROLLED
UNSTIRRED WATER BATHS



BACK TO
SCHOOL

SLS SELECT EDUCATION PRODUCT BROCHURE

