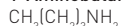


N-Butylamine

Danger



1-Aminobutane



M. Wt: 73.14

Purity: >98%

H. Phrase: H225 H332 H312 H302 H314 H335

P. Phrase: P210 P280 P305+P351+P338 P302+P352

CAS No: 109-73-9

Packaging: Glass

Group: II

UN No: 1125

UN Class: 3

CHE5778SE

250mL

£9.48

Caffeine

Warning



1,3,7-Trimethylxanthine



M. Wt: 194.19

Purity: 100%

H. Phrase: H302

P. Phrase: P264 P270 P301+P312 P330

CAS No: 58-08-2

Packaging: Plastic

CHE5510SE

25g

£6.68

Calcium Metal Granulated

Danger



Ca

M. Wt: 40.08

Purity: 98.5%

H. Phrase: H261

P. Phrase: P223 P232 P280 P335+P334 P378 P402+P404

CAS No: 7440-70-2

Packaging: Plastic

Group: II

UN No: 1401

UN Class: 4.3

CHE5315SE

25g

£6.08

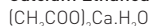
CHE1497SE

100g

£14.10

Calcium Acetate

Calcium Ethanoate



M. Wt: 176.18

Purity: >99%

CAS No: 62-54-4

Packaging: Plastic

CHE5512SE

250g

£8.96

Calcium Bromide

Warning

CaBr₂·xH₂O

M. Wt: 199.90 [Anhydrous] Purity: >98%

H. Phrase: H315 H319 H335

P. Phrase: P264 P280 P260 P271 P332+P313 P337+P313

CAS No: 7789-41-5

Packaging: Plastic

CHE9057SE

100g

£19.45

Calcium Carbonate Ore 2-4mm

Marble Chips



M. Wt: 100.09

CAS No: 471-34-1

CHE2494SE

3kg

£4.81

Calcium Carbonate Ore 6-8mm

Marble Chips



M. Wt: 100.09

CAS No: 471-34-1

Packaging: Plastic

CHE2498SE

3kg

£5.43

Calcium Carbonate Ore 9-12mm

Marble Chips



M. Wt: 100.09

CAS No: 471-34-1

Packaging: Plastic

CHE2502SE

3kg

£5.22

Calcium Carbonate Precipitated



M. Wt: 100.09

Purity: >98%

CAS No: 471-34-1

Packaging: Plastic

CHE1470SE

1kg

£5.63

CHE1472SE

3kg

£12.44

Calcium Chloride Hexahydrate

Warning

CaCl₂·6H₂O

M. Wt: 219.08

Purity: >97%

H. Phrase: H319

P. Phrase: P264 P280 P305+P351+P338 P337+P313

CAS No: 7774-34-7

Packaging: Plastic

CHE1476SE

500g

£13.80

Calcium Chloride Anhydrous

Granular Size 2.0mm

Warning

CaCl₂

M. Wt: 110.99

Purity: >96%

H. Phrase: H319

P. Phrase: P264 P280 P305+P351+P338 P337+P313

CAS No: 10043-52-4

Packaging: Plastic

CHE1480SE

500g

£3.61

CHE5514SE

2kg

£13.21