

## 1. Preserved Sheep Hearts

Whole preserved lamb heart suitable for student dissection. Sheep hearts have 4 chambers like that of a human heart meaning they are ideal for teaching circulation.

Preserved in formalin then Phenoxetol and vacuum packed for storage and delivery. Once opened, use immediately or submerge in preserving fluid.

**This product is non-returnable.**

Code	Pack	Price
BIO1086	Each	£11.95
BIO1088	5	£41.90
BIO1090	10	£60.00



## 2. Frozen Cow Heart

Whole cow heart suitable for student dissection. Cow hearts have 4 chambers like that of a human heart meaning they are ideal for teaching circulation and the large size works well for demonstrations and open evenings.

Specimens are vacuum sealed and frozen. Upon receipt specimen will have defrosted, they can then be re-frozen for dissection at a later date (use within 2 years) or kept refrigerated if required imminently (within 2 days).

**This product is non-returnable.**

Code	Pack	Price
BIO1092	Each	£25.00



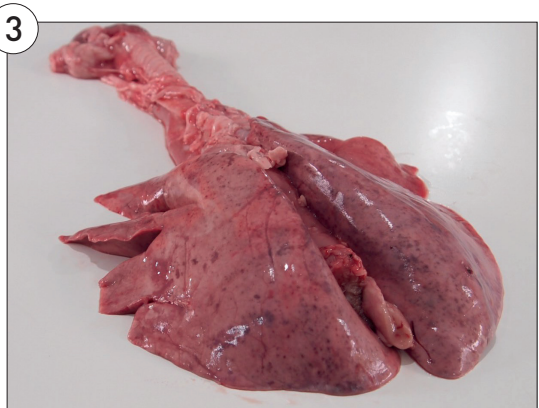
## 3. Frozen Sheep Lungs and Trachea

This partial lambs pluck contains the heart, lungs and trachea and is ideal for dissection. The organs are still attached allowing students to see how they relate to one another. The lungs are intact allowing respiration experiments to be undertaken (there may be small incisions resulting from vet checks).

Frozen specimens are vacuum sealed and frozen. Upon receipt specimen will have defrosted, they can be re-frozen for dissection at a later date (up to 2 years) or refrigerated and used immediately (within 2 days).

**This product is non-returnable.**

Code	Pack	Price
BIO1094	Each	£15.24



## 4. Frozen Pluck

This full lamb's pluck contains the heart, lungs, trachea, and liver and is ideal for dissection. The organs are still attached allowing students to see how they relate to one another. The lungs are intact allowing respiration experiments to be undertaken (there may be small incisions resulting from vet checks or slaughter).

This specimen is vacuum sealed and frozen. Upon receipt specimen will have defrosted, they can then be re-frozen for dissection at a later date (use within 2 years) or kept refrigerated if required imminently (within 2 days).

**This product is non-returnable.**

Code	Pack	Price
BB2182	Each	£26.05

