

1. Malvern Energy Conversion Devices

Separately available units which enable the user to show transfers of one form of energy to another.

Fly Wheel Unit

For use with a large motor/generator and a lamp unit to demonstrate the transfer of electrical energy to kinetic energy and back again. Comprising an iron flywheel 115mm diameter, mass 1.2kg in cast bracket with bearings. Shaft has an aluminium 44mm diameter pulley for driving. Spring belt supplied.

Code	Pack	Price
PH0467D	Each	£53.90

Turbine/Pump Unit

Use as a water turbine to drive a generator producing electricity or as a pump driven by a motor, raising a head of water to produce potential energy. The rotor has eight bucket blades and is housed in a block turbine chamber 50 x 50 x 25mm with a clear Perspex® front. Two inlet (for turbine and pump) and one outlet tubes are provided. The shaft carries a 15mm diameter pulley. A driving belt is supplied.

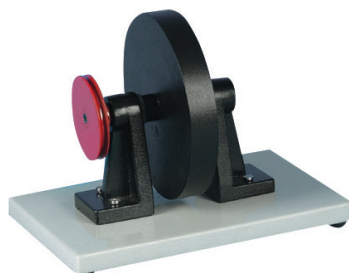
Code	Pack	Price
PH0467G	Each	£28.37

Mounted Lamp

12v 24w SBC bulb in a metal socket, mounted on a base with pair of 4mm sockets to tie into solar cell. For energy transfer experiments.

Code	Description	Pack	Price
PH0467MN	Mounted lamp	Each	£11.46
RAYBULBN	Spare bulb	Each	£1.56

1



Price Match Guarantee!

PRICE
MATCH



We'll price match any like for like product and guarantee to beat any price that you've been quoted!

To find out more, visit:
science2education.co.uk/pricematch