

1. Model, Monocot Stem T.S.

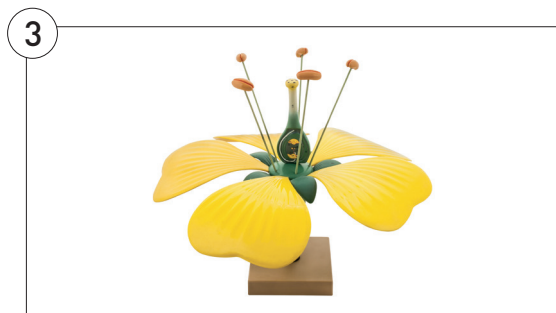
Model of monocot stem showing vascular bundles in transverse section. Mounted on base. Numbered parts with key card included.

Code	Pack	Price
BM16	Each	£28.16

2. Model, Monocot Root T.S.

Model of monocot root showing internal details in transverse section. Mounted on base. Numbered parts with key card included.

Code	Pack	Price
BM26	Each	£25.99



3. Model Flower on Base

Model of a typical flower that can be used for detailed study of structure and functional parts. All parts are removable for better viewing, and the ovary is bisected for view of internal structures. Mounted on a base. Supplied with key card. Size 17 x 8 x 13 inches approx.

Code	Pack	Price
BM0002	Each	£50.84



4. Flower Model, Dissectable

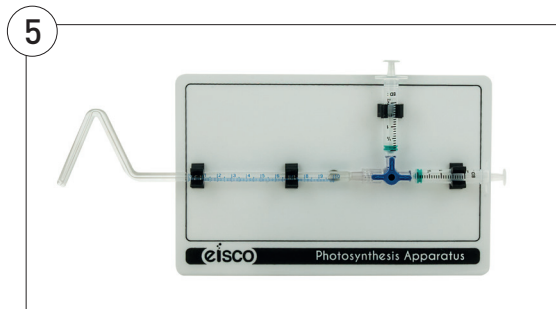
Representing a greatly enlarged idealised complete flower, this break resistant plastic model teaches angiosperm pollination and fertilisation. Mounted on base. Numbered with key card. Dims, (l x w x h): 31 x 18 x 38.1cm.



Code	Pack	Price
BB0134	Each	£43.09

5. Photosynthesis Apparatus

For the measurement and collection of gas evolved by aquatic plants during photosynthesis. The gas evolved can be measured using the calibrated capillary tube and drawn off for analysis using the plastic syringes. Mounted on a plastic panel, 190mm x 150mm.

Code	Pack	Price
B228	Each	£30.42



Including the full range of data loggers and sensors! [See our Data Logging section](#)