

1. Microscopy Slides, Plant Structure Set

Includes:

- *Marchantia*
- *Marchantia polymorpha* V.S. antheridiophore with antheridia
- *Marchantia polymorpha* V.S. sporogonium
- Moss leaf W.M.
- Moss L.S. of antheridial head
- *Mnium* L.S. of capsule
- *Selaginella*
- *Dryopteris filix-mas* T.S. pinnule
- Fern prothallus W.M.
- *Pinus* stem macerated wood. W.M.
- *Pinus* L.S. male cone with microspores
- *Pinus* L.S. whole female cone (1st year)
- *Allium* root tip stained for mitosis
- *Drosera* W.M. leaf
- Monocot and dicot root T.S.
- Monocot and dicot stem T.S.
- Monocot and dicot leaf T.S.
- *Ranunculus* L.S. flower general floral
- Mixed pollen W.M.
- Germinating pollen L.S. stigma
- *Lilium* embryo sac T.S. unspecified
- *Capsella* L.S. ovule cotyledon stage
- *Zea* L.S. germinating seed

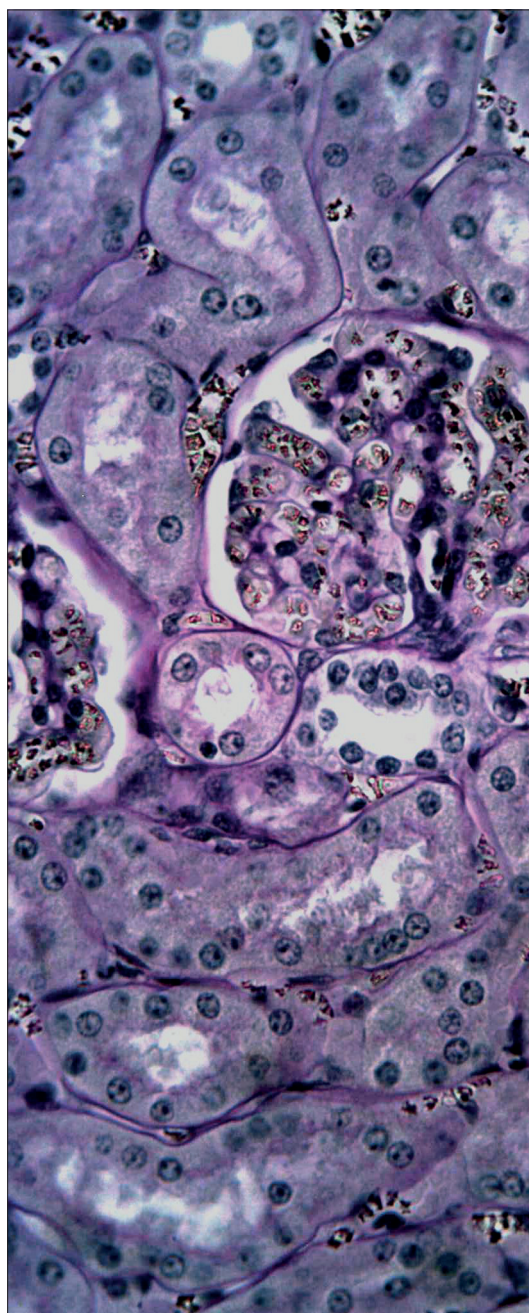
Code	Pack	Price
A18752	Each	£173.00

2. Microscope Prepared Slide Set Plant Structure

Set of 18 slides demonstrating important structures and processes in angiosperm plants.

- Includes:
- *Ranunculus* T.S. mature root
- *Zea mays* T.S. root
- *Allium* L.S. root tip for mitosis
- *Cucurbita* T.S. L.S. stem
- *Tilia* annual ringed
- *Zea* T.S. L.S. stem
- *Buxus* lower epidermis
- *Ranunculus* L.S. flower
- *Capsella* L.S. ovule
- *Triticum* germinating seed
- Stigma with pollen tube
- Pollen grains
- *Ligustrum* T.S. leaf
- *Vicia* young root hairs
- *Lilium* T.S. mature anthers pollen
- *Ranunculus* T.S. stem
- *Helianthus* T.S. stem old secondary thickening
- *Zea* T.S. leaf

Code	Pack	Price
A04959	Each	£105.73



Can't Find It?

Let us know. We have over 400,000 products available so if you can't find it... we will!

